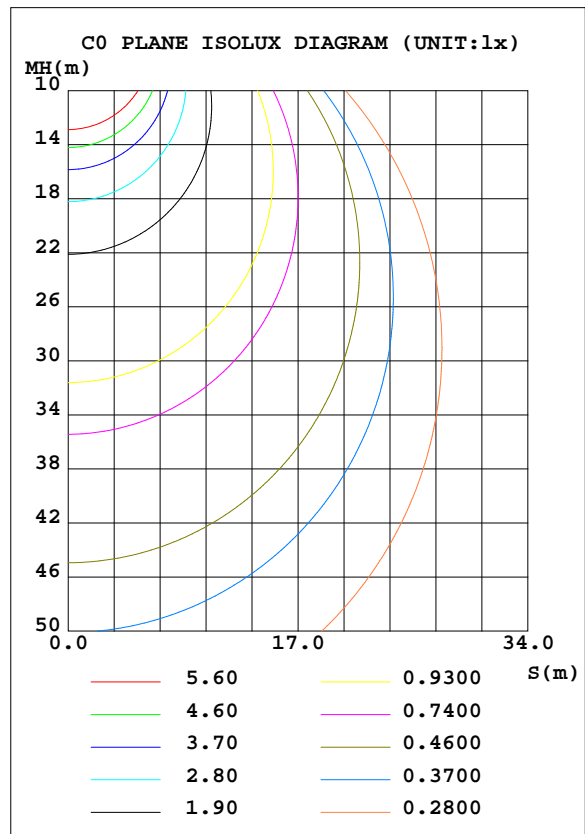
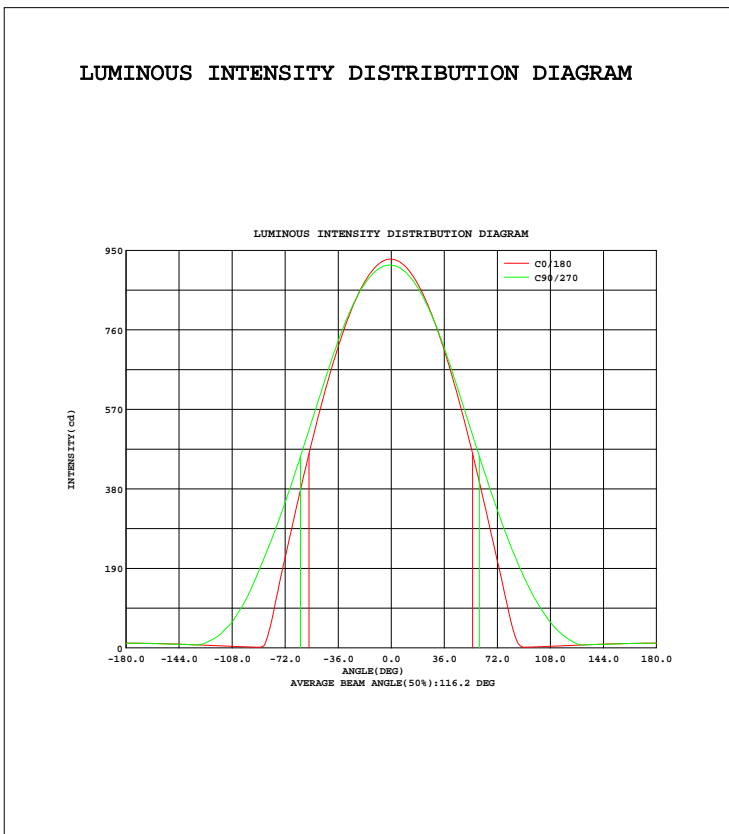


LUMINAIRE PHOTOMETRIC TEST REPORT

Test:U:229.7V I:0.2762A P:32.76W PF:0.5162 Lamp Flux:3016.95x1 lm		
NAME: 02TP-JH3-36W	TYPE:LED	WEIGHT:
SPEC.:	DIM.:	SERIAL No.:1
MFR.:	SUR.:	Shielding Angle:

DATA OF LAMP		PHOTOMETRIC DATA Eff: 92.08 lm/W			
MODEL		I _{max} (cd)	929.1	S/MH(C0/180)	1.25
NOMINAL POWER(W)		LOR(%)	100.0	S/MH(C90/270)	1.28
RATED VOLTAGE(V)	230	TOTAL FLUX(lm)	3017.0	η UP, DN(C0-180)	2.7,46.8
NOMINAL FLUX(lm)	3016.95	CIE CLASS	DIRECT	η UP, DN(C180-360)	2.8,47.7
LAMPS INSIDE	1	η up(%)	5.5	CIBSE SHR NOM	1.25
TEST VOLTAGE(V)	230	η down(%)	94.5	CIBSE SHR MAX	1.35



C Range: 0 - 360DEG
C Interval: 22.5DEG
Test Speed: HIGH
Temperature:25.3DEG
Operators:
Test Date:08 August 2018

γ Range: 0 - 180DEG
γ Interval: 1.0DEG
Test System:EVERFINE GO-2000A_V1 SYSTEM V2.0.351
Humidity:65.0%
Test Distance:7.580m [K=1.0000]
Remarks:

ZONAL FLUX DIAGRAM

ZONAL FLUX DIAGRAM:

γ	C0	C45	C90	C135	C180	C225	C270	C315	γ	Φ zone	Φ total	%lum,lamp
10	909.9	897.8	896.9	897.2	912.6	906.2	901.9	893.0	0- 10	86.74	86.74	2.88,2.88
20	856.6	845.5	849.0	851.0	861.9	861.6	859.0	842.8	10- 20	248.4	335.1	11.1,11.1
30	773.3	764.3	773.5	775.3	780.5	787.4	787.7	764.0	20- 30	376.4	711.5	23.6,23.6
40	665.2	659.2	675.3	674.6	673.6	687.9	693.2	661.3	30- 40	454.4	1166	38.6,38.6
50	537.4	537.1	566.2	555.3	545.9	569.1	584.9	541.1	40- 50	474.4	1640	54.4,54.4
60	393.8	410.7	455.8	428.8	401.9	441.5	474.6	415.3	50- 60	439.1	2079	68.9,68.9
70	239.9	291.4	350.0	308.0	246.6	319.3	367.6	296.1	60- 70	360.2	2439	80.9,80.9
80	82.08	187.7	253.6	201.9	83.26	211.6	269.9	192.8	70- 80	256.6	2696	89.4,89.4
90	1.669	106.5	170.2	117.0	1.666	117.7	182.7	110.9	80- 90	154.2	2850	94.5,94.5
100	2.730	50.25	102.9	57.62	2.719	55.14	106.5	53.61	90-100	82.61	2933	97.2,97.2
110	4.080	18.70	53.08	21.12	4.072	23.87	53.41	20.32	100-110	39.61	2972	98.5,98.5
120	5.575	5.988	21.81	6.058	5.542	6.953	22.92	5.864	110-120	16.87	2989	99.1,99.1
130	7.101	7.297	7.198	6.982	7.048	6.994	7.167	7.145	120-130	7.426	2997	99.3,99.3
140	8.469	8.473	8.316	8.204	8.448	8.236	8.180	8.365	130-140	5.966	3003	99.5,99.5
150	9.624	9.510	9.319	9.287	9.661	9.367	9.242	9.447	140-150	5.571	3008	99.7,99.7
160	10.53	10.37	10.25	10.20	10.49	10.25	10.14	10.28	150-160	4.557	3013	99.9,99.9
170	11.17	10.98	11.02	10.87	11.15	10.92	10.95	10.88	160-170	3.010	3016	100,100
180	11.49	11.30	11.35	11.23	11.59	11.35	11.37	11.24	170-180	1.060	3017	100,100
DEG	LUMINOUS INTENSITY:cd									UNIT:lm		

Conical surface Flux(90deg): 1404.2 lm

%lum = 46.5%

%lamp = 46.5%

Conical surface Flux(120deg): 2079.3 lm

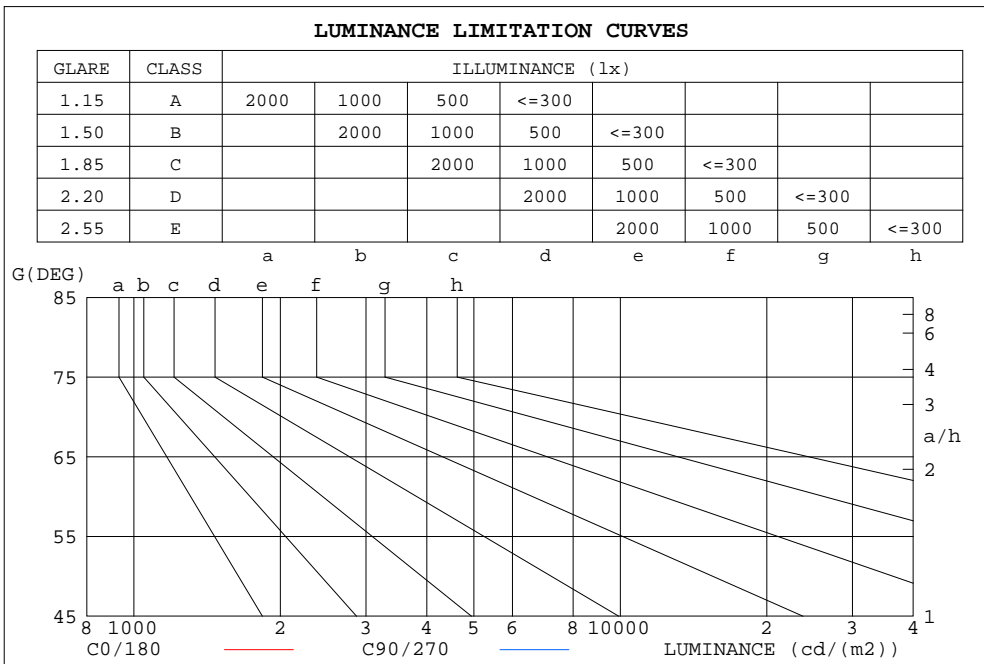
%lum = 68.9%

%lamp = 68.9%

C Range: 0 - 360DEG
 C Interval: 22.5DEG
 Test Speed: HIGH
 Temperature:25.3DEG
 Operators:
 Test Date:08 August 2018

γ Range: 0 - 180DEG
 γ Interval: 1.0DEG
 Test System:EVERFINE GO-2000A_V1 SYSTEM V2.0.351
 Humidity:65.0%
 Test Distance:7.580m [K=1.0000]
 Remarks:

LUMINANCE LIMITATION CURVES



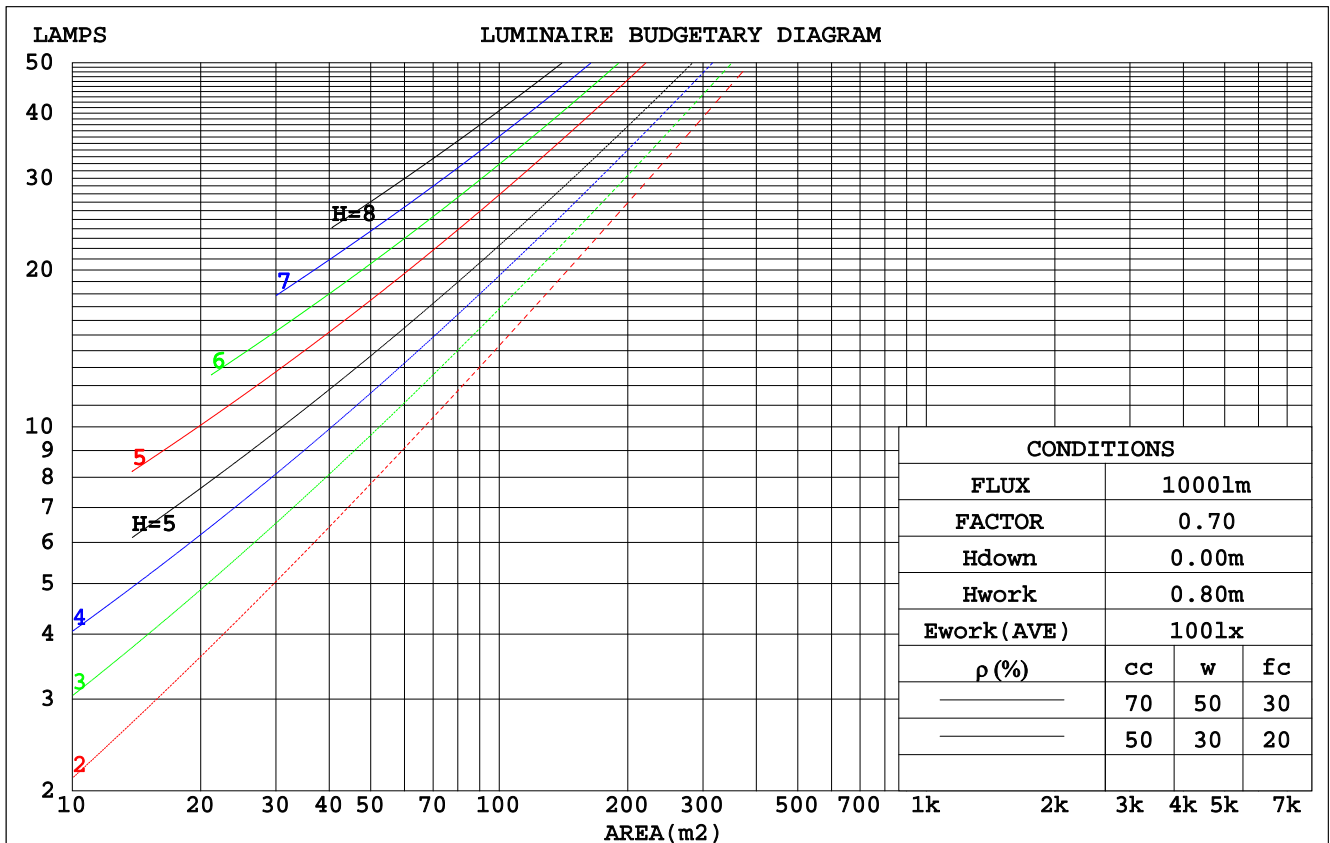
LUMINANCE cd/(m2)		
G (DEG)	C0/180	C90/270
85	215870	2410305
80	472664	1460187
75	627664	1160657
70	701445	1023476
65	751603	951386
60	787599	911661
55	814807	890768
50	836109	880919
45	853567	878869

C Range: 0 - 360DEG
 C Interval: 22.5DEG
 Test Speed: HIGH
 Temperature: 25.3DEG
 Operators:
 Test Date: 08 August 2018

γ Range: 0 - 180DEG
 γ Interval: 1.0DEG
 Test System: EVERFINE GO-2000A_V1 SYSTEM V2.0.351
 Humidity: 65.0%
 Test Distance: 7.580m [K=1.0000]
 Remarks:

CU AND LUMINAIRE BUDGETARY ESTIMATE DIAGRAM

ρ_{cc}	80%			70%			50%			30%			10%			0
ρ_w	50%	30%	10%	50%	30%	10%	50%	30%	10%	50%	30%	10%	50%	30%	10%	0
ρ_{fc}	20%			20%			20%			20%			20%			0
RCR	RCR:Room Cavity Ratio						Coefficients of Utilization(CU)									
0.0	1.18	1.18	1.18	1.14	1.14	1.14	1.08	1.08	1.08	1.02	1.02	1.02	.97	.97	.97	.94
1.0	1.00	.95	.91	.98	.93	.89	.92	.89	.85	.87	.84	.82	.83	.80	.78	.76
2.0	.87	.79	.73	.84	.77	.72	.80	.74	.69	.76	.71	.67	.72	.68	.64	.62
3.0	.76	.67	.60	.74	.66	.59	.70	.63	.57	.66	.61	.56	.63	.58	.54	.52
4.0	.67	.58	.51	.65	.57	.50	.62	.54	.49	.59	.53	.47	.56	.51	.46	.44
5.0	.60	.50	.43	.58	.49	.43	.55	.48	.42	.53	.46	.41	.50	.45	.40	.38
6.0	.54	.44	.38	.52	.44	.37	.50	.42	.37	.48	.41	.36	.46	.40	.35	.33
7.0	.48	.40	.33	.47	.39	.33	.45	.38	.32	.43	.37	.32	.42	.36	.31	.29
8.0	.44	.36	.30	.43	.35	.29	.41	.34	.29	.40	.33	.28	.38	.32	.28	.26
9.0	.41	.32	.27	.40	.32	.26	.38	.31	.26	.37	.30	.25	.35	.29	.25	.23
10.0	.37	.29	.24	.37	.29	.24	.35	.28	.23	.34	.28	.23	.33	.27	.23	.21



C Range: 0 - 360DEG
 C Interval: 22.5DEG
 Test Speed: HIGH
 Temperature: 25.3DEG
 Operators:
 Test Date: 08 August 2018

γ Range: 0 - 180DEG
 γ Interval: 1.0DEG
 Test System: EVERFINE GO-2000A_V1 SYSTEM V2.0.351
 Humidity: 65.0%
 Test Distance: 7.580m [K=1.0000]
 Remarks:

WEC AND CCEC

ρ_{cc}	80%			70%			50%			30%			10%			0
ρ_w	50%	30%	10%	50%	30%	10%	50%	30%	10%	50%	30%	10%	50%	30%	10%	0
ρ_{fc}	20%			20%			20%			20%			20%			0
RCR	RCR:Room Cavity Ratio						Wall Exitance Coefficients(WEC)									
0.0																
1.0	.352	.200	.063	.343	.196	.062	.326	.187	.060	.311	.179	.058	.297	.172	.055	
2.0	.315	.173	.053	.307	.169	.052	.292	.163	.050	.279	.156	.049	.266	.150	.047	
3.0	.285	.152	.045	.278	.149	.045	.264	.143	.044	.252	.138	.042	.241	.133	.041	
4.0	.259	.135	.040	.253	.132	.039	.241	.128	.038	.230	.124	.037	.220	.119	.036	
5.0	.237	.121	.035	.232	.119	.035	.221	.115	.034	.211	.111	.033	.202	.108	.032	
6.0	.219	.110	.031	.214	.108	.031	.204	.105	.030	.195	.101	.030	.187	.098	.029	
7.0	.203	.100	.028	.198	.099	.028	.189	.096	.028	.181	.093	.027	.174	.090	.027	
8.0	.188	.092	.026	.184	.091	.026	.177	.088	.025	.169	.086	.025	.162	.083	.024	
9.0	.176	.085	.024	.172	.084	.024	.165	.082	.023	.159	.080	.023	.152	.077	.022	
10.0	.165	.079	.022	.162	.078	.022	.155	.076	.021	.149	.074	.021	.143	.072	.021	

ρ_{cc}	80%			70%			50%			30%			10%			0
ρ_w	50%	30%	10%	50%	30%	10%	50%	30%	10%	50%	30%	10%	50%	30%	10%	0
ρ_{fc}	20%			20%			20%			20%			20%			0
RCR	RCR:Room Cavity Ratio						Ceiling Cavity Exitance Coefficients(CCEC)									
0.0	.233	.233	.233	.199	.199	.199	.136	.136	.136	.078	.078	.078	.025	.025	.025	
1.0	.226	.198	.173	.193	.170	.149	.132	.117	.103	.076	.068	.060	.024	.022	.019	
2.0	.218	.175	.138	.187	.150	.119	.128	.104	.083	.074	.060	.049	.024	.020	.016	
3.0	.210	.157	.115	.180	.136	.100	.124	.094	.070	.071	.055	.041	.023	.018	.014	
4.0	.202	.144	.100	.174	.125	.087	.119	.087	.061	.069	.051	.036	.022	.017	.012	
5.0	.195	.134	.089	.167	.116	.078	.115	.081	.055	.067	.048	.033	.022	.016	.011	
6.0	.187	.126	.082	.161	.109	.071	.111	.076	.050	.064	.045	.030	.021	.015	.010	
7.0	.180	.119	.076	.155	.103	.066	.107	.072	.047	.062	.043	.028	.020	.014	.009	
8.0	.174	.113	.072	.150	.098	.063	.103	.069	.045	.060	.041	.027	.019	.013	.009	
9.0	.167	.108	.069	.144	.094	.060	.100	.066	.043	.058	.039	.025	.019	.013	.008	
10.0	.162	.104	.066	.139	.091	.058	.097	.064	.041	.056	.038	.024	.018	.012	.008	

C Range: 0 - 360DEG
 C Interval: 22.5DEG
 Test Speed: HIGH
 Temperature:25.3DEG
 Operators:
 Test Date:08 August 2018

γ Range: 0 - 180DEG
 γ Interval: 1.0DEG
 Test System:EVERFINE GO-2000A_V1 SYSTEM V2.0.351
 Humidity:65.0%
 Test Distance:7.580m [K=1.0000]
 Remarks:

UGR(Unified Glare Rating) Table

ceiling/cavity	0.7	0.7	0.5	0.5	0.3	0.7	0.7	0.5	0.5	0.3
walls	0.5	0.3	0.5	0.3	0.3	0.5	0.3	0.5	0.3	0.3
working plane	0.2	0.2	0.2	0.2	0.2	0.2	0.2	0.2	0.2	0.2
Room dimensions	Viewed crosswise					Viewed endwise				
x = 2H y = 2H	35.5	37.0	35.8	37.3	37.6	36.1	37.6	36.4	37.9	38.2
3H	37.0	38.3	37.3	38.7	39.0	38.2	39.6	38.6	39.9	40.3
4H	37.5	38.9	37.9	39.2	39.6	39.3	40.6	39.7	41.0	41.4
6H	37.9	39.1	38.3	39.5	39.9	40.5	41.7	40.9	42.1	42.5
8H	38.0	39.2	38.4	39.5	40.0	41.1	42.3	41.6	42.7	43.1
12H	38.0	39.1	38.4	39.5	39.9	41.9	43.0	42.3	43.4	43.9
4H 2H	36.2	37.5	36.6	37.9	38.2	36.7	38.0	37.1	38.3	38.7
3H	37.9	39.0	38.3	39.4	39.9	39.0	40.2	39.4	40.5	41.0
4H	38.6	39.7	39.1	40.1	40.5	40.3	41.3	40.7	41.8	42.2
6H	39.1	40.1	39.6	40.5	41.0	41.7	42.6	42.2	43.1	43.6
8H	39.2	40.1	39.7	40.6	41.1	42.4	43.3	42.9	43.8	44.3
12H	39.3	40.1	39.8	40.6	41.1	43.3	44.1	43.8	44.6	45.2
8H 4H	39.2	40.0	39.7	40.5	41.0	40.6	41.5	41.1	42.0	42.5
6H	39.9	40.7	40.5	41.2	41.7	42.3	43.0	42.8	43.5	44.1
8H	40.2	40.9	40.8	41.4	42.0	43.2	43.9	43.8	44.4	45.0
12H	40.4	41.0	41.0	41.5	42.1	44.3	44.9	44.9	45.5	46.1
12H 4H	39.3	40.1	39.8	40.6	41.1	40.6	41.4	41.1	41.9	42.4
6H	40.2	40.9	40.8	41.4	42.0	42.4	43.0	42.9	43.6	44.1
8H	40.6	41.2	41.2	41.8	42.4	43.4	44.0	44.0	44.5	45.1
Variations with the observer position at spacings:										
S = 1.0H	+ 0.1 / - 0.2					+ 0.1 / - 0.1				
1.5H	+ 0.2 / - 0.3					+ 0.2 / - 0.3				
2.0H	+ 0.1 / - 0.3					+ 0.2 / - 0.3				

CIE Pub.117 Corrected 3017 lm Total Lamp Luminous Flux.(8log(F/F0) = 3.8)

C Range: 0 - 360DEG

C Interval: 22.5DEG

Test Speed: HIGH

Temperature:25.3DEG

Operators:

Test Date:08 August 2018

 γ Range: 0 - 180DEG γ Interval: 1.0DEG

Test System:EVERFINE GO-2000A_V1 SYSTEM V2.0.351

Humidity:65.0%

Test Distance:7.580m [K=1.0000]

Remarks:

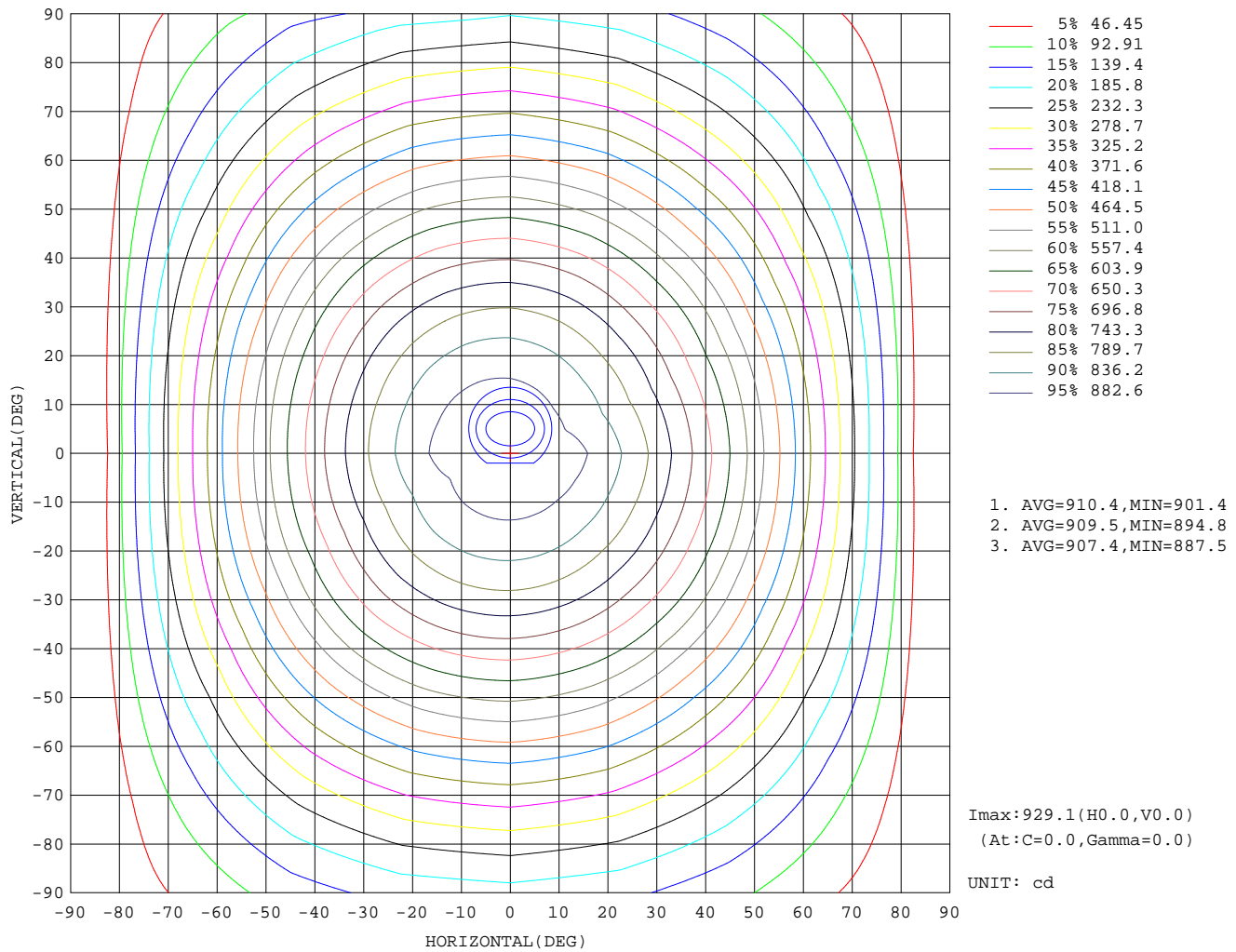
UTILIZATION FACTORS TABLE

REFLECTANCE										
Ceiling	0.8	0.8	0.8	0.7	0.7	0.7	0.5	0.5	0.5	0
Walls	0.7	0.5	0.3	0.7	0.5	0.3	0.7	0.5	0.3	0
Working plane	0.2	0.2	0.2	0.2	0.2	0.2	0.2	0.2	0.2	0
ROOM INDEX	UTILIZATION FACTORS(PERCENT) $k(RI) \times RCR = 5$									
$k = 0.60$	54	42	35	53	42	35	52	41	34	28
0.80	64	51	44	62	51	43	60	50	43	36
1.00	72	60	52	70	59	52	68	60	51	43
1.25	79	67	59	77	66	59	74	64	58	50
1.50	84	73	65	82	72	64	78	69	63	54
2.00	91	81	73	88	79	73	84	77	71	62
2.50	95	86	79	92	84	78	88	81	75	66
3.00	98	90	84	96	88	82	91	85	80	70
4.00	102	96	90	100	94	88	94	89	85	75
5.00	105	99	94	102	97	92	97	93	89	78
ROOM INDEX	UF(total)									Direct
According to DIN EN 13032-2 2004			Suspended				SHRNOM = 1.25			

C Range: 0 - 360DEG
 C Interval: 22.5DEG
 Test Speed: HIGH
 Temperature: 25.3DEG
 Operators:
 Test Date: 08 August 2018

γ Range: 0 - 180DEG
 γ Interval: 1.0DEG
 Test System: EVERFINE GO-2000A_V1 SYSTEM V2.0.351
 Humidity: 65.0%
 Test Distance: 7.580m [K=1.0000]
 Remarks:

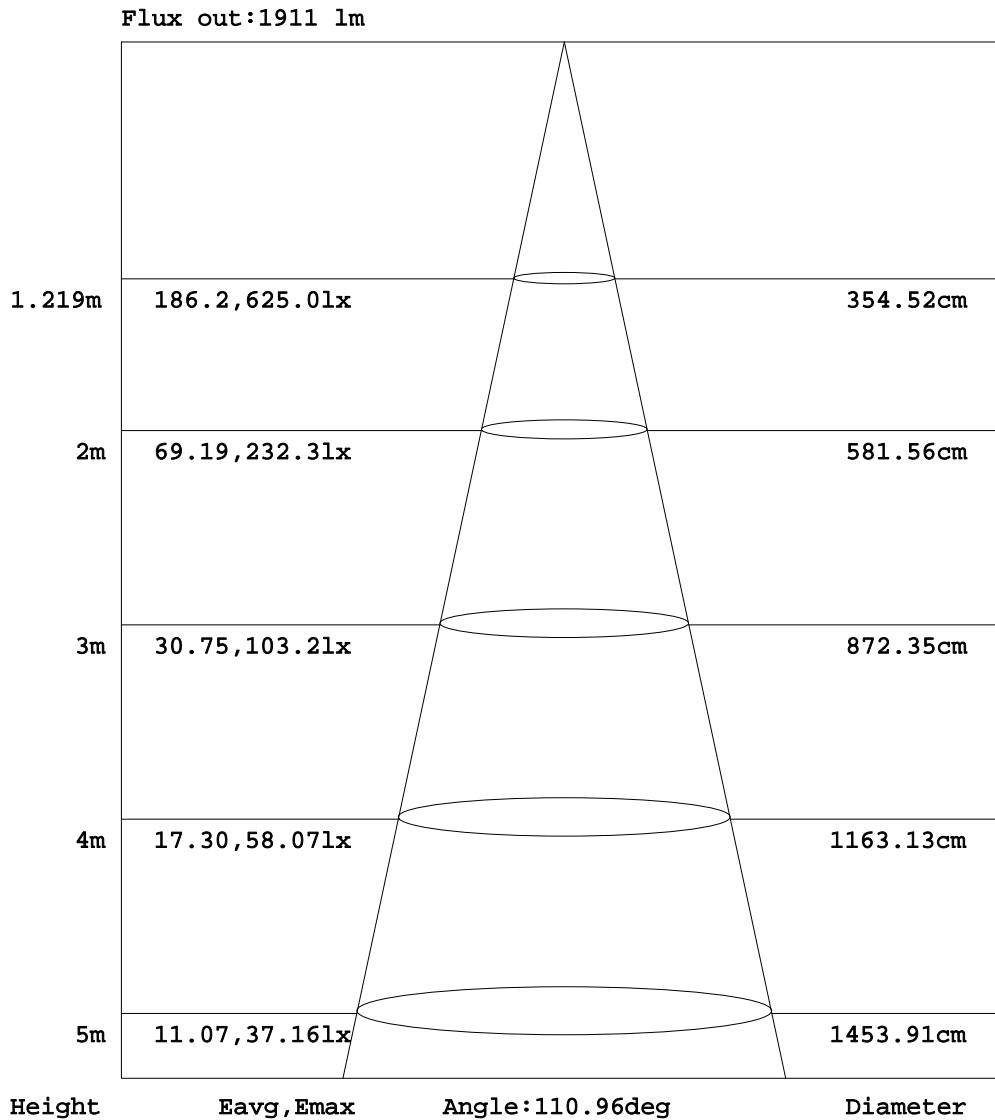
ISOCANDELA DIAGRAM



C Range: 0 - 360DEG
 C Interval: 22.5DEG
 Test Speed: HIGH
 Temperature: 25.3DEG
 Operators:
 Test Date: 08 August 2018

γ Range: 0 - 180DEG
 γ Interval: 1.0DEG
 Test System: EVERFINE GO-2000A_V1 SYSTEM V2.0.351
 Humidity: 65.0%
 Test Distance: 7.580m [K=1.0000]
 Remarks:

AAI Figure

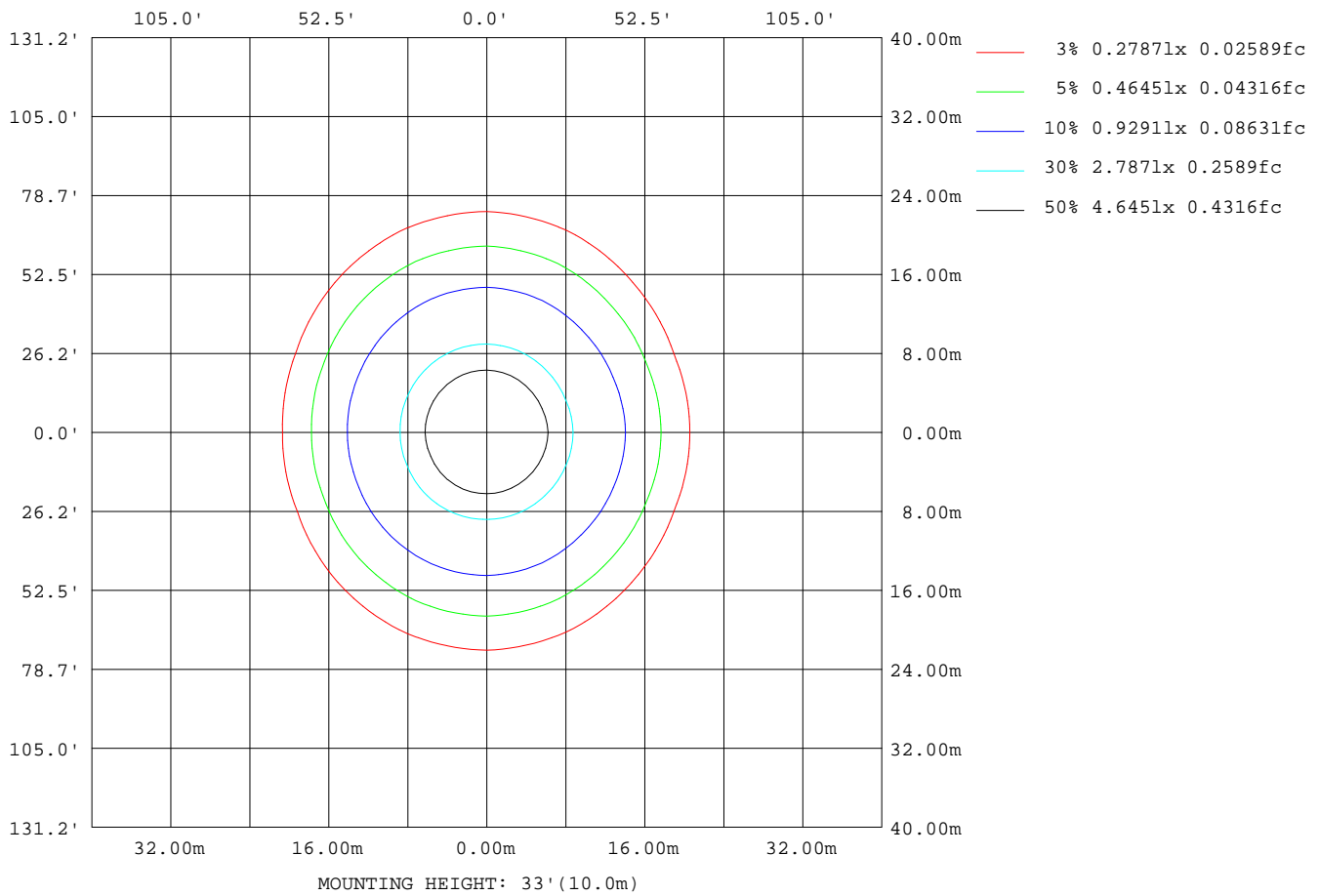


Note: The Curves indicate the illuminated area and the average illumination when the luminaire is at different distance.

C Range: 0 - 360DEG
 C Interval: 22.5DEG
 Test Speed: HIGH
 Temperature: 25.3DEG
 Operators:
 Test Date: 08 August 2018

γ Range: 0 - 180DEG
 γ Interval: 1.0DEG
 Test System: EVERFINE GO-2000A_V1 SYSTEM V2.0.351
 Humidity: 65.0%
 Test Distance: 7.580m [K=1.0000]
 Remarks:

ISOLUX DIAGRAM



C Range: 0 - 360DEG
 C Interval: 22.5DEG
 Test Speed: HIGH
 Temperature: 25.3DEG
 Operators:
 Test Date: 08 August 2018

γ Range: 0 - 180DEG
 γ Interval: 1.0DEG
 Test System: EVERFINE GO-2000A_V1 SYSTEM V2.0.351
 Humidity: 65.0%
 Test Distance: 7.580m [K=1.0000]
 Remarks:

LED Avg.L Report

Test:U:229.7V I:0.2762A P:32.76W PF:0.5162 Lamp Flux:3016.95x1 lm		
NAME: 1.2m净化灯	TYPE:LED	WEIGHT:
SPEC.:	DIM.:	SERIAL No.:1
MFR.:	SUR.:	Shielding Angle:

AvgL	cd/m2
L_0~180(65)av	760346
L_0~180(75)av	639848
L_0~180(85)av	196758
L_90~270(65)av	972979
L_90~270(75)av	1193547
L_90~270(85)av	2499423
L_45(65)av	858024
L_45(75)av	960676
L_45(85)av	1762757

Standard: GB/T 29293-2012

C Range: 0 - 360DEG

C Interval: 22.5DEG

Test Speed: HIGH

Temperature:25.3DEG

Operators:

Test Date:08 August 2018

 γ Range: 0 - 180DEG γ Interval: 1.0DEG

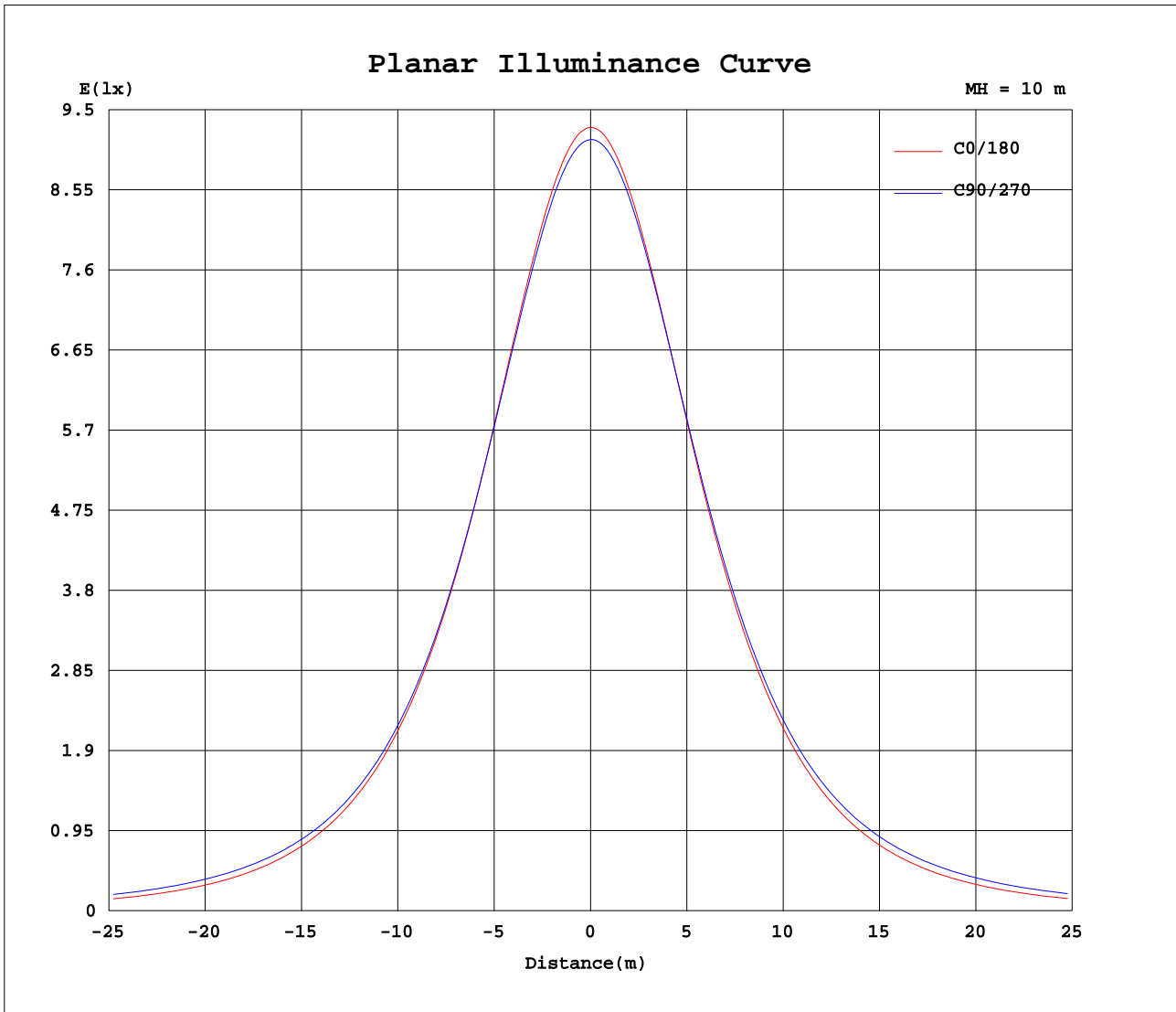
Test System:EVERFINE GO-2000A_V1 SYSTEM V2.0.351

Humidity:65.0%

Test Distance:7.580m [K=1.0000]

Remarks:

Planar Illuminance Curve



C Range: 0 - 360DEG
 C Interval: 22.5DEG
 Test Speed: HIGH
 Temperature: 25.3DEG
 Operators:
 Test Date: 08 August 2018

γ Range: 0 - 180DEG
 γ Interval: 1.0DEG
 Test System: EVERFINE GO-2000A_V1 SYSTEM V2.0.351
 Humidity: 65.0%
 Test Distance: 7.580m [K=1.0000]
 Remarks:

LUMINOUS DISTRIBUTION INTENSITY DATA

Table--1

UNIT: cd

C(DEG) γ (DEG)	0	22.5	45	67.5	90	112.5	135	157.5	180	202.5	225	247.5	270	292.5	315	337.5			
0	929	922	918	916	915	913	911	910	929	922	918	916	915	913	911	910			
5	924	916	912	910	910	909	908	907	925	919	916	914	912	909	906	905			
10	910	902	898	897	897	897	897	895	913	908	906	904	902	898	893	891			
15	887	879	875	876	877	877	878	875	891	888	888	887	884	879	872	869			
20	857	849	845	847	849	850	851	847	862	860	862	861	859	852	843	839			
25	818	811	808	811	814	816	817	812	825	824	828	829	827	818	807	802			
30	773	766	764	769	773	775	775	769	781	781	787	790	788	778	764	758			
35	722	715	714	721	727	729	728	720	730	732	740	745	743	732	715	708			
40	665	658	659	668	675	677	675	666	674	678	688	694	693	680	661	653			
45	604	597	600	612	621	621	617	606	612	617	630	639	640	625	603	592			
50	537	531	537	555	566	564	555	542	546	553	569	582	585	568	541	528			
55	467	462	474	498	511	507	492	474	476	485	505	525	530	511	478	460			
60	394	391	411	441	456	450	429	404	402	414	441	468	475	454	415	390			
65	318	319	350	385	402	394	367	332	325	341	379	412	420	398	354	318			
70	240	249	291	332	350	340	308	261	247	269	319	357	368	345	296	249			
75	162	184	237	282	300	289	253	196	169	202	263	305	317	294	242	184			
80	82.1	127	188	235	254	241	202	137	83.3	142	212	257	270	246	193	128			
85	18.8	80.3	144	192	210	198	156	88.4	15.5	92.5	165	212	226	202	149	81.7			
90	1.67	45.8	107	152	170	158	117	51.9	1.67	54.8	118	161	183	162	111	47.2			
95	2.15	23.1	75.1	118	134	122	84.4	27.2	2.27	23.7	77.6	121	142	127	79.2	24.4			
100	2.73	10.6	50.3	87.7	103	91.6	57.6	12.9	2.72	13.8	55.1	95.2	106	95.8	53.6	11.4			
105	3.39	4.85	31.6	62.4	75.7	65.5	35.1	5.27	3.37	6.56	37.8	65.9	77.8	69.4	34.1	5.20			
110	4.08	4.32	18.7	42.3	53.1	44.1	21.1	4.06	4.07	4.11	23.9	46.2	53.4	47.8	20.3	4.23			
115	4.82	5.05	10.2	27.0	35.3	28.3	11.3	4.76	4.80	4.80	13.7	31.3	35.7	31.0	11.3	4.93			
120	5.57	5.78	5.99	15.8	21.8	15.5	6.06	5.47	5.54	5.52	6.95	19.9	22.9	18.7	5.86	5.65			
125	6.34	6.50	6.64	7.79	11.8	8.39	6.32	6.18	6.30	6.23	6.35	10.9	14.0	9.48	6.51	6.36			
130	7.10	7.20	7.30	7.34	7.20	7.19	6.98	6.87	7.05	6.92	6.99	7.06	7.17	7.07	7.14	7.05			
135	7.81	7.86	7.90	7.91	7.76	7.79	7.60	7.55	7.77	7.62	7.63	7.65	7.62	7.67	7.77	7.71			
140	8.47	8.49	8.47	8.47	8.32	8.36	8.20	8.17	8.45	8.26	8.24	8.22	8.18	8.23	8.37	8.33			
145	9.08	9.08	9.01	8.99	8.83	8.92	8.76	8.78	9.09	8.89	8.82	8.78	8.72	8.79	8.92	8.92			
150	9.62	9.61	9.51	9.47	9.32	9.43	9.29	9.34	9.66	9.43	9.37	9.31	9.24	9.30	9.45	9.46			
155	10.1	10.1	9.97	9.91	9.80	9.90	9.77	9.83	10.1	9.83	9.80	9.75	9.70	9.71	9.86	9.86			
160	10.5	10.5	10.4	10.3	10.2	10.3	10.2	10.3	10.5	10.3	10.3	10.2	10.1	10.1	10.3	10.3			
165	10.9	10.9	10.7	10.6	10.7	10.7	10.6	10.6	10.9	10.6	10.6	10.6	10.6	10.5	10.6	10.6			
170	11.2	11.1	11.0	10.9	11.0	11.0	10.9	10.9	11.1	10.9	10.9	10.9	10.9	10.8	10.9	10.9			
175	11.4	11.3	11.2	11.1	11.2	11.1	11.1	11.2	11.4	11.1	11.1	11.1	11.2	11.0	11.1	11.1			
180	11.5	11.4	11.3	11.3	11.4	11.2	11.2	11.3	11.6	11.4	11.3	11.2	11.4	11.2	11.2	11.3			

C Range: 0 - 360DEG
 C Interval: 22.5DEG
 Test Speed: HIGH
 Temperature: 25.3DEG
 Operators:
 Test Date: 08 August 2018

γ Range: 0 - 180DEG
 γ Interval: 1.0DEG
 Test System: EVERFINE GO-2000A_V1 SYSTEM V2.0.351
 Humidity: 65.0%
 Test Distance: 7.580m [K=1.0000]
 Remarks: