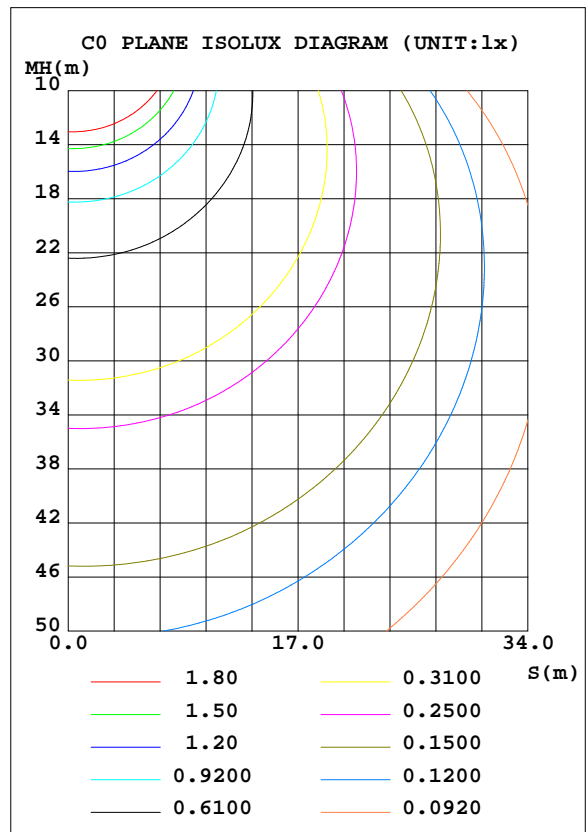
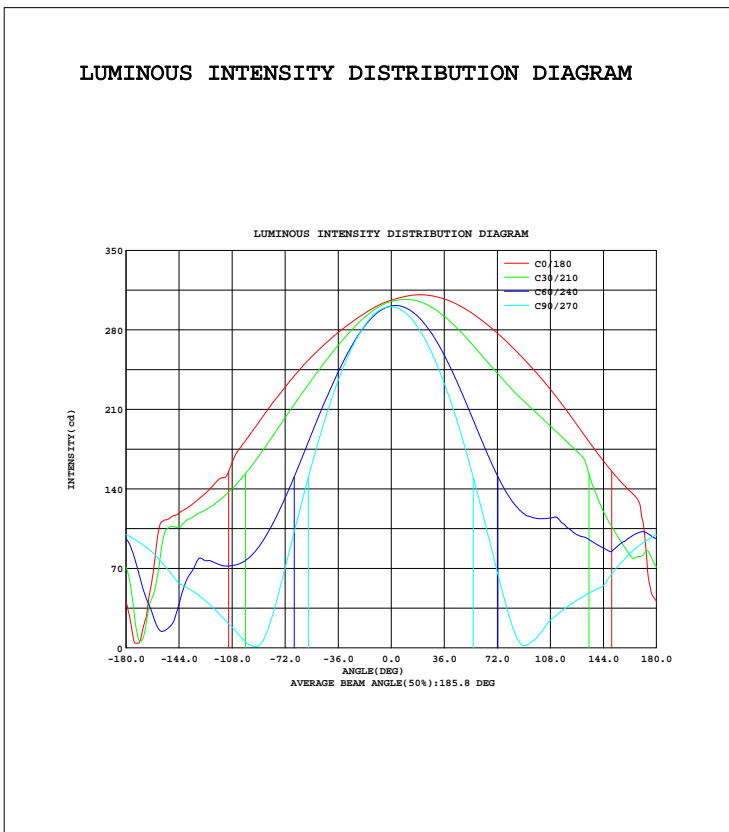


LUMINAIRE PHOTOMETRIC TEST REPORT

Test:U:230.0V I:0.1390A P:17.90W PF:0.5153 Lamp Flux:2004.29x1 lm		
NAME: 03T8-G-120-18W	TYPE:	WEIGHT:
SPEC.:	DIM.:	SERIAL No.:1
MFR.:	SUR.:0.025*1.105	Shielding Angle:

DATA OF LAMP		PHOTOMETRIC DATA Eff: 111.97 lm/W			
MODEL		Imax(cd)	310.9	S/MH(C0/180)	1.41
NOMINAL POWER(W)	18	LOR(%)	100.0	S/MH(C90/270)	1.26
RATED VOLTAGE(V)	230	TOTAL FLUX(lm)	2004.3	η UP, DN(C0-180)	17.9,33.0
NOMINAL FLUX(lm)	2004.29	CIE CLASS	SEMI-D.	η UP, DN(C180-360)	16.6,32.5
LAMPS INSIDE	1	η up(%)	34.5	CIBSE SHR NOM	1.50
TEST VOLTAGE(V)	230	η down(%)	65.5	CIBSE SHR MAX	1.55



C Range: 0 - 360DEG
 C Interval: 30.0DEG
 Test Speed: LOW
 Temperature:25.3DEG
 Operators:
 Test Date:28 December 2020

γ Range: 0 - 180DEG
 γ Interval: 0.5DEG
 Test System:EVERFINE GO-2000A_V1 SYSTEM V2.0.351
 Humidity:65.0%
 Test Distance:7.640m [K=1.0000]
 Remarks:

ZONAL FLUX DIAGRAM

ZONAL FLUX DIAGRAM:

γ	C0	C45	C90	C135	C180	C225	C270	C315	γ	Φ zone	Φ total	%lum, lamp
5	308.0	303.8	298.8	296.8	303.8	300.7	299.2	301.3	0- 5	7.212	7.212	0.36,0.36
10	309.5	303.0	294.6	292.1	300.7	296.7	295.4	301.2	5- 10	21.47	28.68	1.43,1.43
15	310.7	300.7	287.7	286.0	297.0	291.2	289.0	299.5	10- 15	35.22	63.90	3.19,3.19
20	310.9	296.9	278.4	278.5	292.9	284.3	280.0	296.1	15- 20	48.17	112.1	5.59,5.59
25	310.4	291.6	266.6	269.8	288.5	276.1	268.5	291.2	20- 25	60.01	172.1	8.59,8.59
30	309.4	284.7	252.5	259.8	283.8	267.0	254.7	284.8	25- 30	70.49	242.6	12.1,12.1
35	307.7	276.7	236.3	249.0	278.6	256.7	238.8	277.0	30- 35	79.43	322.0	16.1,16.1
40	305.3	267.4	218.5	237.3	273.3	245.7	220.7	267.9	35- 40	86.67	408.7	20.4,20.4
45	302.3	257.2	198.6	224.9	267.5	234.3	200.8	257.8	40- 45	92.14	500.8	25,25
50	298.7	246.3	176.8	212.2	261.5	222.3	179.2	247.0	45- 50	95.79	596.6	29.8,29.8
55	294.5	235.0	153.5	199.1	254.9	209.8	156.0	235.5	50- 55	97.64	694.2	34.6,34.6
60	290.0	223.4	128.8	186.1	248.1	197.2	131.5	223.6	55- 60	97.76	792.0	39.5,39.5
65	284.8	212.0	103.3	172.9	240.7	184.5	106.6	211.6	60- 65	96.33	888.3	44.3,44.3
70	279.4	201.1	77.28	160.0	232.9	172.2	80.71	200.1	65- 70	93.54	981.9	49,49
75	273.7	190.9	51.71	147.9	224.6	160.2	55.07	189.3	70- 75	89.66	1072	53.5,53.5
80	267.5	181.8	28.23	136.4	216.5	148.8	31.07	179.7	75- 80	85.08	1157	57.7,57.7
85	261.0	174.0	9.757	125.9	207.6	138.2	11.84	171.4	80- 85	80.20	1237	61.7,61.7
90	254.3	167.8	1.976	116.9	198.5	128.7	1.734	164.7	85- 90	75.65	1312	65.5,65.5
95	247.3	163.2	5.111	109.4	189.4	120.5	2.124	159.7	90- 95	72.06	1385	69.1,69.1
100	240.1	159.5	11.00	103.7	180.5	113.9	6.951	156.2	95-100	69.10	1454	72.5,72.5
105	232.5	156.5	19.71	99.58	171.6	108.8	14.08	153.7	100-105	66.40	1520	75.8,75.8
110	224.4	153.9	26.56	96.80	156.5	104.9	20.85	149.0	105-110	63.49	1584	79,79
115	216.0	149.1	31.80	95.33	149.7	102.1	27.48	147.1	110-115	60.10	1644	82,82
120	207.3	143.1	36.71	95.30	144.2	100.9	34.19	140.8	115-120	56.70	1700	84.8,84.8
125	198.4	137.4	41.10	95.99	137.4	99.53	40.29	135.8	120-125	52.72	1753	87.5,87.5
130	189.3	132.9	44.94	95.73	131.8	98.97	45.71	130.6	125-130	48.63	1802	89.9,89.9
135	180.2	122.4	48.79	91.44	126.4	91.38	50.26	119.0	130-135	43.64	1845	92.1,92.1
140	171.4	111.5	52.05	83.30	122.0	83.53	54.21	109.2	135-140	37.52	1883	93.9,93.9
145	163.0	102.3	56.59	70.13	117.6	69.92	58.10	100.9	140-145	31.37	1914	95.5,95.5
150	155.0	95.83	65.68	56.67	114.6	62.93	66.47	95.49	145-150	25.80	1940	96.8,96.8
155	147.5	93.23	73.79	40.57	111.5	54.64	74.21	93.12	150-155	21.10	1961	97.8,97.8
160	140.6	90.52	80.49	25.95	82.41	37.99	81.71	91.53	155-160	16.18	1977	98.7,98.7
165	134.4	89.34	86.54	28.04	39.24	35.69	87.38	91.50	160-165	11.71	1989	99.2,99.2
170	115.5	91.59	91.70	48.33	7.902	32.74	92.12	94.27	165-170	8.252	1997	99.6,99.6
175	58.52	91.93	96.00	75.59	8.378	59.60	96.33	95.58	170-175	5.162	2002	99.9,99.9
180	40.59	83.59	99.41	92.31	40.84	83.51	99.58	92.22	175-180	1.871	2004	100,100
DEG	LUMINOUS INTENSITY:cd								UNIT:lm			

Conical surface Flux(90deg): 500.81 lm

%lum = 25.0%
 %lamp = 25.0%

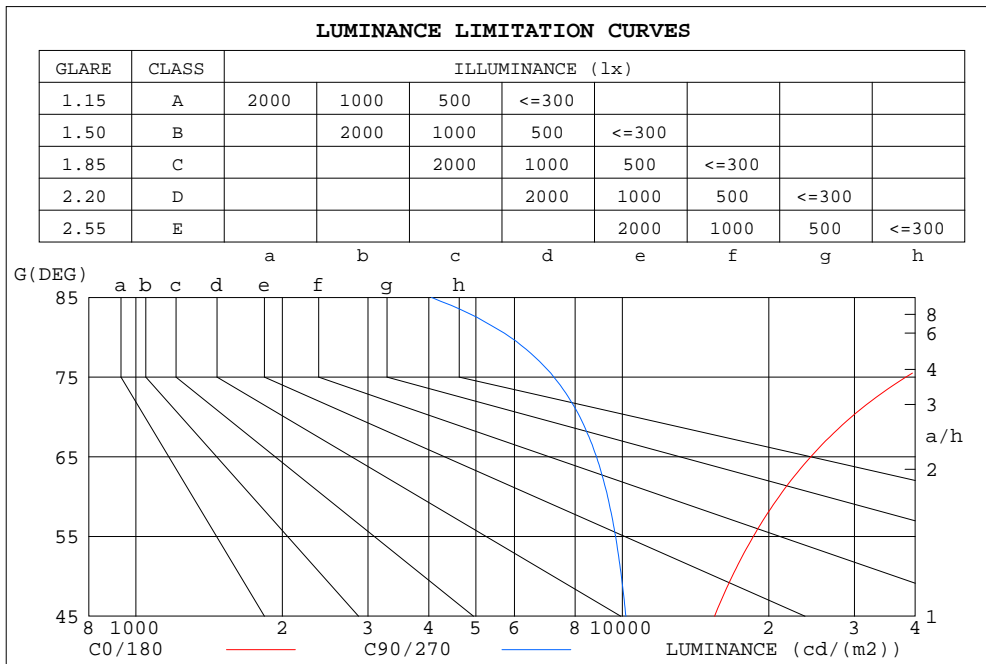
Conical surface Flux(120deg): 792 lm

%lum = 39.5%
 %lamp = 39.5%

C Range: 0 - 360DEG
 C Interval: 30.0DEG
 Test Speed: LOW
 Temperature:25.3DEG
 Operators:
 Test Date:28 December 2020

γ Range: 0 - 180DEG
 γ Interval: 0.5DEG
 Test System:EVERFINE GO-2000A_V1 SYSTEM V2.0.351
 Humidity:65.0%
 Test Distance:7.640m [K=1.0000]
 Remarks:

LUMINANCE LIMITATION CURVES



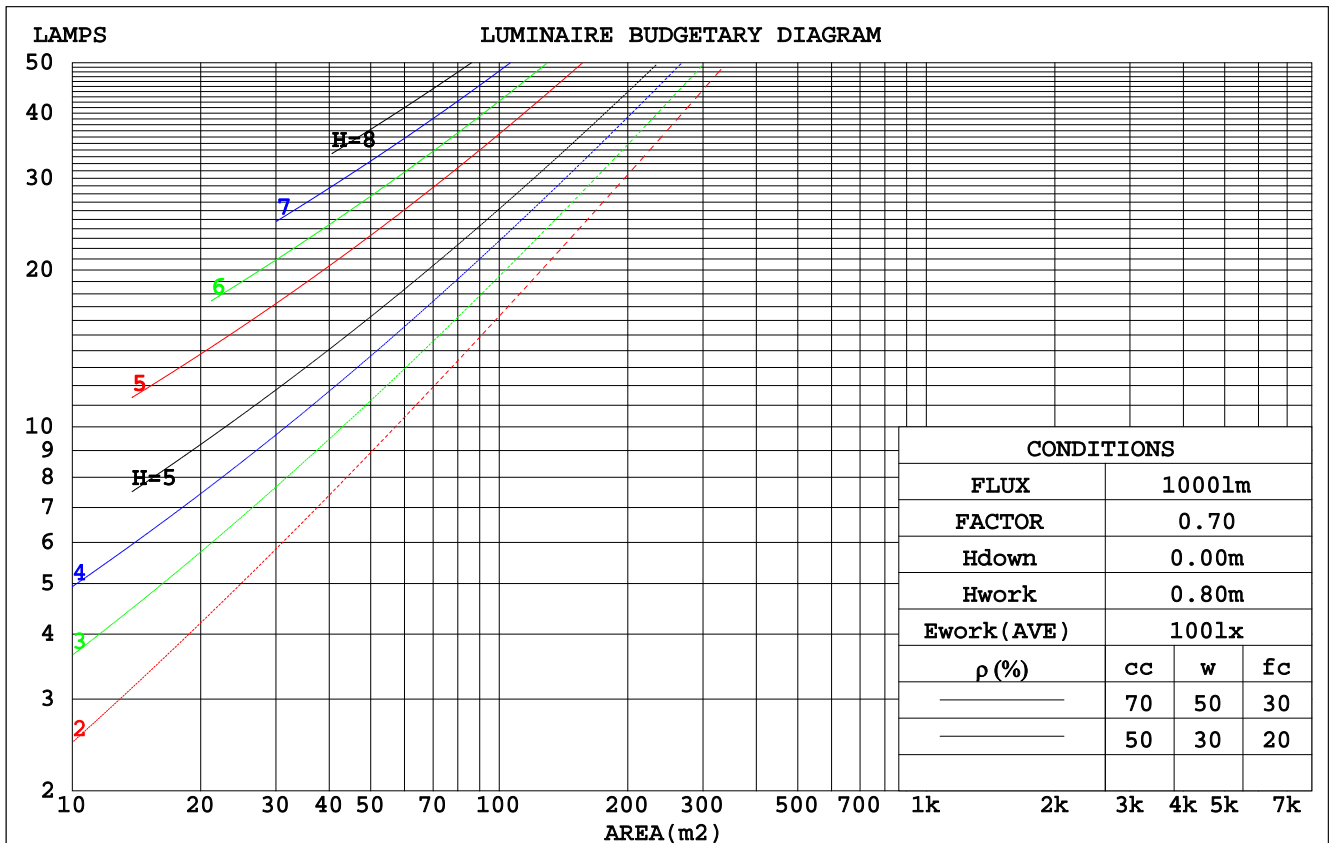
LUMINANCE cd/(m2)		
G (DEG)	C0/180	C90/270
85	108415	4053
80	55765	5885
75	38278	7233
70	29572	8179
65	24397	8851
60	20992	9328
55	18587	9685
50	16820	9957
45	15476	10167

C Range: 0 - 360DEG
 C Interval: 30.0DEG
 Test Speed: LOW
 Temperature: 25.3DEG
 Operators:
 Test Date: 28 December 2020

γ Range: 0 - 180DEG
 γ Interval: 0.5DEG
 Test System: EVERFINE GO-2000A_V1 SYSTEM V2.0.351
 Humidity: 65.0%
 Test Distance: 7.640m [K=1.0000]
 Remarks:

CU AND LUMINAIRE BUDGETARY ESTIMATE DIAGRAM

ρcc	80%			70%			50%			30%			10%			0
ρw	50%	30%	10%	50%	30%	10%	50%	30%	10%	50%	30%	10%	50%	30%	10%	0
ρfc	20%			20%			20%			20%			20%			0
RCR	RCR:Room Cavity Ratio						Coefficients of Utilization(CU)									
0.0	1.11	1.11	1.11	1.04	1.04	1.04	.92	.92	.92	.81	.81	.81	.70	.70	.70	.65
1.0	.92	.86	.81	.86	.81	.77	.75	.72	.68	.66	.63	.60	.56	.54	.52	.48
2.0	.78	.70	.64	.73	.66	.60	.64	.59	.54	.56	.51	.47	.48	.44	.41	.37
3.0	.68	.59	.52	.63	.55	.49	.55	.49	.44	.48	.43	.39	.41	.37	.34	.30
4.0	.59	.50	.43	.56	.47	.41	.49	.42	.36	.42	.37	.32	.36	.32	.28	.25
5.0	.52	.43	.36	.49	.41	.34	.43	.36	.31	.38	.32	.27	.32	.28	.24	.21
6.0	.47	.38	.31	.44	.36	.30	.39	.32	.27	.34	.28	.24	.29	.25	.21	.18
7.0	.42	.33	.27	.40	.32	.26	.35	.28	.23	.31	.25	.21	.27	.22	.18	.16
8.0	.38	.30	.24	.36	.28	.23	.32	.25	.20	.28	.22	.18	.24	.20	.16	.14
9.0	.35	.27	.21	.33	.25	.20	.29	.23	.18	.26	.20	.16	.22	.18	.15	.12
10.0	.32	.24	.19	.30	.23	.18	.27	.21	.16	.24	.18	.15	.21	.16	.13	.11



C Range: 0 - 360DEG
 C Interval: 30.0DEG
 Test Speed: LOW
 Temperature: 25.3DEG
 Operators:
 Test Date: 28 December 2020

γ Range: 0 - 180DEG
 γ Interval: 0.5DEG
 Test System: EVERFINE GO-2000A_V1 SYSTEM V2.0.351
 Humidity: 65.0%
 Test Distance: 7.640m [K=1.0000]
 Remarks:

WEC AND CCEC

ρ_{cc}	80%			70%			50%			30%			10%			0
ρ_w	50%	30%	10%	50%	30%	10%	50%	30%	10%	50%	30%	10%	50%	30%	10%	0
ρ_{fc}	20%			20%			20%			20%			20%			0
RCR	RCR:Room Cavity Ratio						Wall Exitance Coefficients(WEC)									
0.0																
1.0	.385	.219	.069	.368	.210	.067	.335	.192	.061	.304	.175	.056	.276	.160	.052	
2.0	.330	.181	.055	.314	.173	.053	.283	.158	.049	.256	.143	.045	.230	.130	.041	
3.0	.291	.155	.046	.277	.148	.045	.249	.135	.041	.224	.123	.038	.200	.111	.034	
4.0	.262	.136	.040	.248	.130	.038	.223	.118	.035	.200	.107	.032	.178	.097	.029	
5.0	.237	.121	.035	.225	.116	.034	.202	.105	.031	.181	.095	.028	.161	.086	.026	
6.0	.217	.109	.031	.206	.104	.030	.185	.095	.028	.165	.086	.025	.147	.077	.023	
7.0	.200	.099	.028	.190	.095	.027	.171	.086	.025	.152	.078	.023	.135	.070	.021	
8.0	.186	.091	.026	.176	.087	.025	.158	.079	.023	.141	.072	.021	.125	.064	.019	
9.0	.173	.084	.023	.164	.080	.022	.147	.073	.021	.132	.066	.019	.117	.059	.017	
10.0	.162	.078	.022	.154	.074	.021	.138	.068	.019	.123	.061	.017	.109	.055	.016	

ρ_{cc}	80%			70%			50%			30%			10%			0
ρ_w	50%	30%	10%	50%	30%	10%	50%	30%	10%	50%	30%	10%	50%	30%	10%	0
ρ_{fc}	20%			20%			20%			20%			20%			0
RCR	RCR:Room Cavity Ratio						Ceiling Cavity Exitance Coefficients(CCEC)									
0.0	.453	.453	.453	.388	.388	.388	.265	.265	.265	.152	.152	.152	.049	.049	.049	
1.0	.451	.421	.394	.386	.361	.339	.264	.248	.234	.152	.144	.136	.049	.046	.044	
2.0	.444	.399	.360	.380	.343	.312	.261	.237	.217	.150	.138	.127	.048	.045	.042	
3.0	.437	.383	.340	.375	.330	.294	.257	.229	.207	.149	.134	.122	.048	.044	.040	
4.0	.429	.371	.326	.369	.320	.283	.253	.223	.199	.147	.131	.118	.047	.043	.039	
5.0	.422	.361	.317	.362	.313	.275	.250	.218	.195	.145	.128	.115	.047	.042	.038	
6.0	.415	.354	.310	.357	.306	.270	.246	.214	.191	.143	.126	.113	.046	.041	.037	
7.0	.408	.347	.305	.351	.301	.266	.242	.211	.188	.141	.124	.112	.046	.041	.037	
8.0	.401	.342	.301	.346	.297	.263	.239	.208	.186	.139	.123	.111	.045	.040	.037	
9.0	.395	.337	.298	.341	.293	.260	.236	.206	.185	.137	.122	.110	.045	.040	.037	
10.0	.390	.333	.296	.336	.290	.258	.233	.204	.183	.136	.120	.110	.044	.040	.036	

C Range: 0 - 360DEG
 C Interval: 30.0DEG
 Test Speed: LOW
 Temperature: 25.3DEG
 Operators:
 Test Date: 28 December 2020

γ Range: 0 - 180DEG
 γ Interval: 0.5DEG
 Test System: EVERFINE GO-2000A_V1 SYSTEM V2.0.351
 Humidity: 65.0%
 Test Distance: 7.640m [K=1.0000]
 Remarks:

UGR(Unified Glare Rating) Table

ceiling/cavity	0.7	0.7	0.5	0.5	0.3	0.7	0.7	0.5	0.5	0.3
walls	0.5	0.3	0.5	0.3	0.3	0.5	0.3	0.5	0.3	0.3
working plane	0.2	0.2	0.2	0.2	0.2	0.2	0.2	0.2	0.2	0.2
Room dimensions	Viewed crosswise					Viewed endwise				
x = 2H y = 2H	21.6	22.8	22.3	23.5	24.4	18.6	19.7	19.2	20.5	21.3
3H	24.7	25.8	25.4	26.5	27.5	20.1	21.2	20.9	22.0	22.9
4H	26.5	27.5	27.2	28.3	29.2	20.8	21.8	21.5	22.6	23.5
6H	28.4	29.4	29.2	30.2	31.1	21.2	22.2	22.0	23.0	23.9
8H	29.5	30.5	30.3	31.2	32.2	21.4	22.3	22.1	23.1	24.0
12H	30.8	31.7	31.6	32.5	33.5	21.4	22.3	22.2	23.1	24.1
4H 2H	22.2	23.2	22.9	24.0	24.9	20.0	21.1	20.8	21.8	22.8
3H	25.5	26.4	26.3	27.2	28.2	21.9	22.8	22.7	23.6	24.6
4H	27.5	28.3	28.3	29.1	30.1	22.8	23.7	23.6	24.5	25.5
6H	29.6	30.4	30.5	31.2	32.2	23.6	24.3	24.4	25.2	26.2
8H	30.8	31.5	31.7	32.4	33.4	23.8	24.5	24.7	25.4	26.4
12H	32.2	32.9	33.1	33.7	34.8	24.0	24.7	24.9	25.5	26.6
8H 4H	27.8	28.5	28.6	29.3	30.4	24.3	25.0	25.2	25.9	26.9
6H	30.3	30.9	31.2	31.8	32.8	25.6	26.2	26.4	27.0	28.1
8H	31.7	32.3	32.6	33.1	34.3	26.1	26.7	27.0	27.6	28.7
12H	33.4	33.9	34.3	34.8	35.9	26.6	27.1	27.5	28.0	29.1
12H 4H	27.8	28.5	28.7	29.3	30.4	24.9	25.5	25.7	26.4	27.4
6H	30.4	30.9	31.3	31.8	32.9	26.4	26.9	27.3	27.8	28.9
8H	32.0	32.4	32.9	33.3	34.5	27.2	27.6	28.1	28.5	29.7
Variations with the observer position at spacings:										
S = 1.0H	+ 0.1 / - 0.1					+ 0.1 / - 0.1				
1.5H	+ 0.2 / - 0.3					+ 0.2 / - 0.3				
2.0H	+ 0.3 / - 0.3					+ 0.3 / - 0.4				

CIE Pub.117 Corrected 2004 lm Total Lamp Luminous Flux.(8log(F/F0) = 2.4)

C Range: 0 - 360DEG
C Interval: 30.0DEG
Test Speed: LOW
Temperature:25.3DEG
Operators:
Test Date:28 December 2020

γ Range: 0 - 180DEG
 γ Interval: 0.5DEG
Test System:EVERFINE GO-2000A_V1 SYSTEM V2.0.351
Humidity:65.0%
Test Distance:7.640m [K=1.0000]
Remarks:

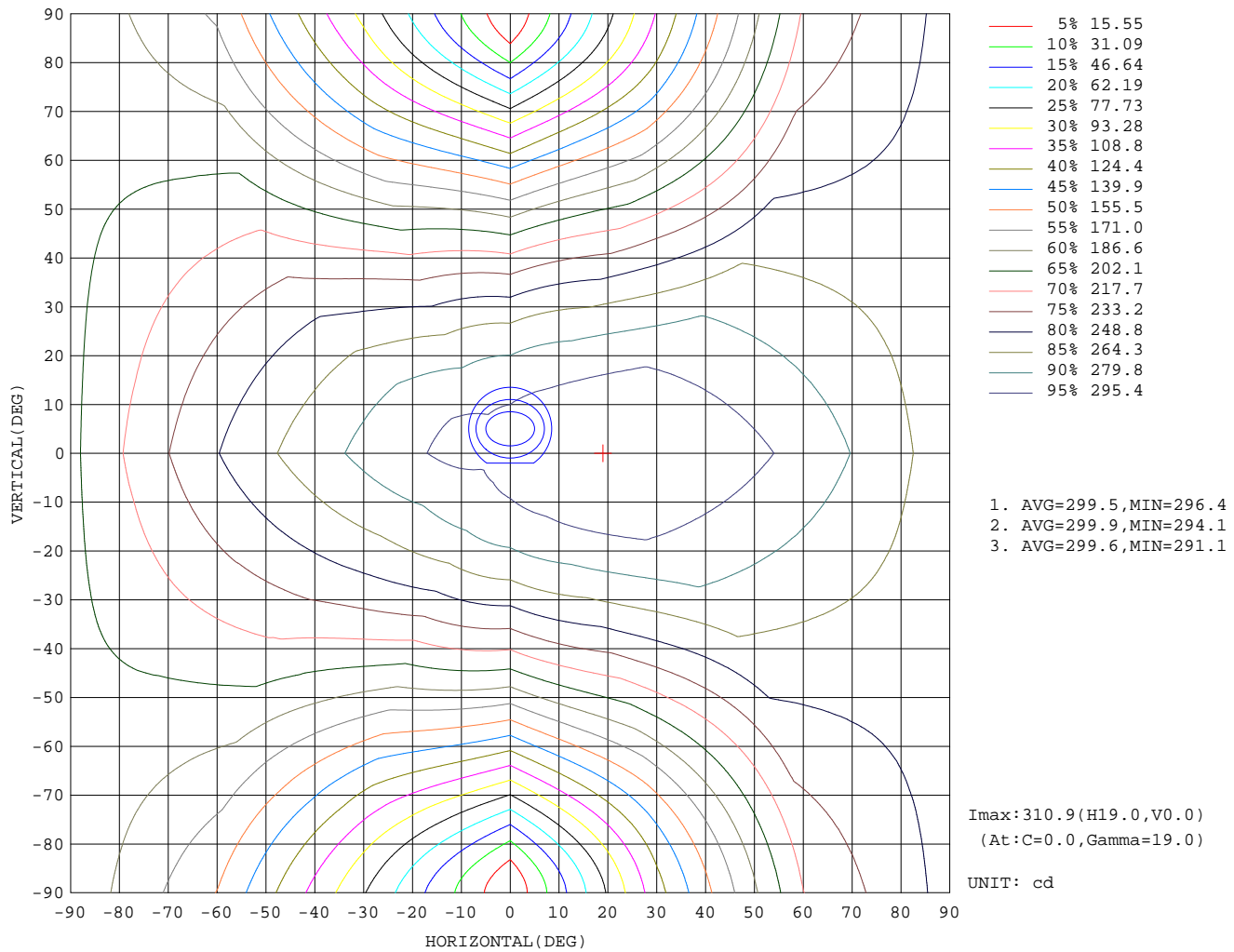
UTILIZATION FACTORS TABLE

REFLECTANCE										
Ceiling	0.8	0.8	0.8	0.7	0.7	0.7	0.5	0.5	0.5	0
Walls	0.7	0.5	0.3	0.7	0.5	0.3	0.7	0.5	0.3	0
Working plane	0.2	0.2	0.2	0.2	0.2	0.2	0.2	0.2	0.2	0
ROOM INDEX	UTILIZATION FACTORS(PERCENT) $k(RI) \times RCR = 5$									
$k = 0.60$	43	30	23	41	29	23	38	28	22	15
0.80	51	38	30	49	37	29	45	35	28	19
1.00	59	46	37	56	44	36	51	43	34	24
1.25	66	53	44	62	51	42	56	47	40	28
1.50	71	58	49	67	56	48	60	51	44	31
2.00	78	67	58	74	64	56	66	58	51	36
2.50	83	72	64	78	69	61	70	62	56	39
3.00	87	77	69	82	73	66	73	66	60	42
4.00	92	83	76	86	79	73	77	71	66	46
5.00	95	88	81	89	83	77	79	74	69	49
ROOM INDEX	UF(total)									Direct
According to DIN EN 13032-2 2004			Suspended				SHRNOM = 1.25			

C Range: 0 - 360DEG
 C Interval: 30.0DEG
 Test Speed: LOW
 Temperature: 25.3DEG
 Operators:
 Test Date: 28 December 2020

γ Range: 0 - 180DEG
 γ Interval: 0.5DEG
 Test System: EVERFINE GO-2000A_V1 SYSTEM V2.0.351
 Humidity: 65.0%
 Test Distance: 7.640m [K=1.0000]
 Remarks:

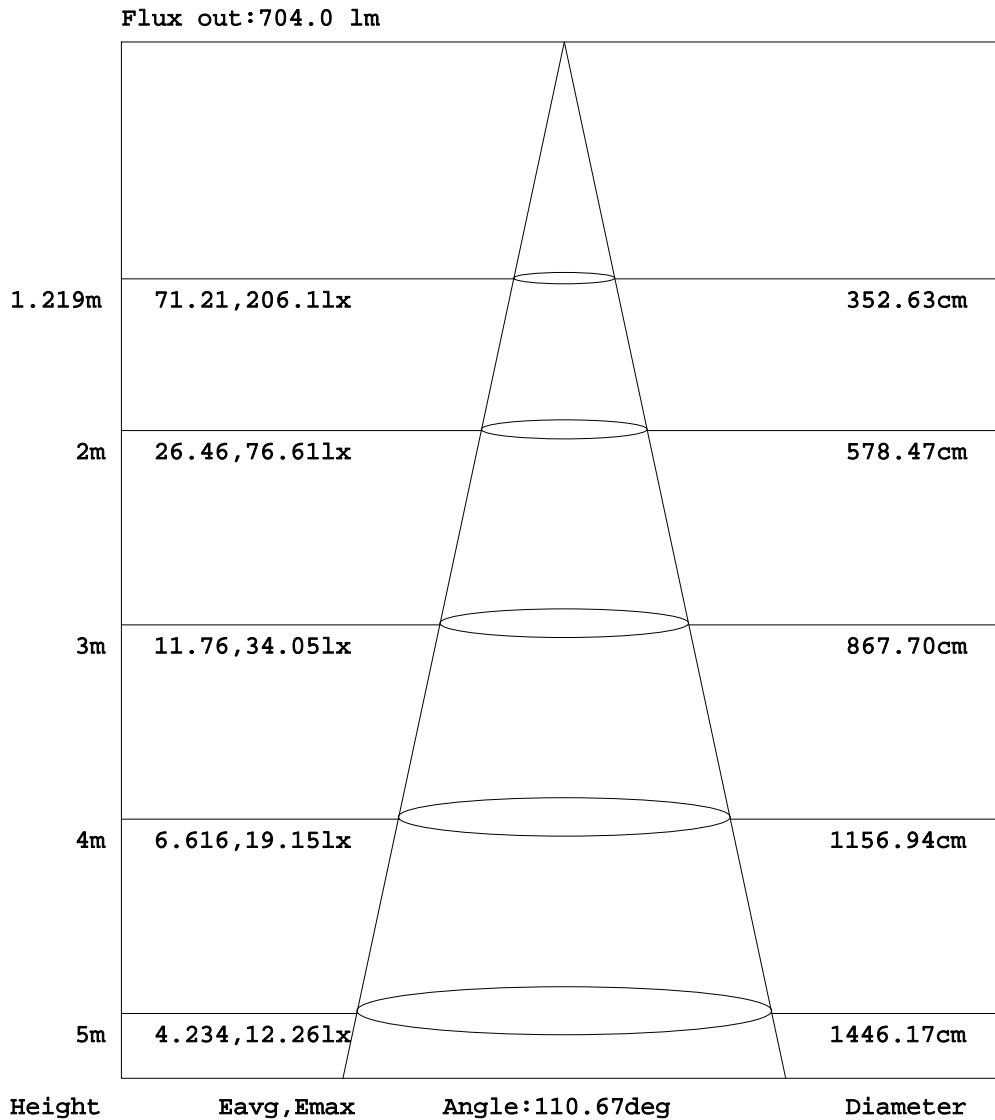
ISOCANDELA DIAGRAM



C Range: 0 - 360DEG
 C Interval: 30.0DEG
 Test Speed: LOW
 Temperature: 25.3DEG
 Operators:
 Test Date: 28 December 2020

γ Range: 0 - 180DEG
 γ Interval: 0.5DEG
 Test System: EVERFINE GO-2000A_V1 SYSTEM V2.0.351
 Humidity: 65.0%
 Test Distance: 7.640m [K=1.0000]
 Remarks:

AAI Figure

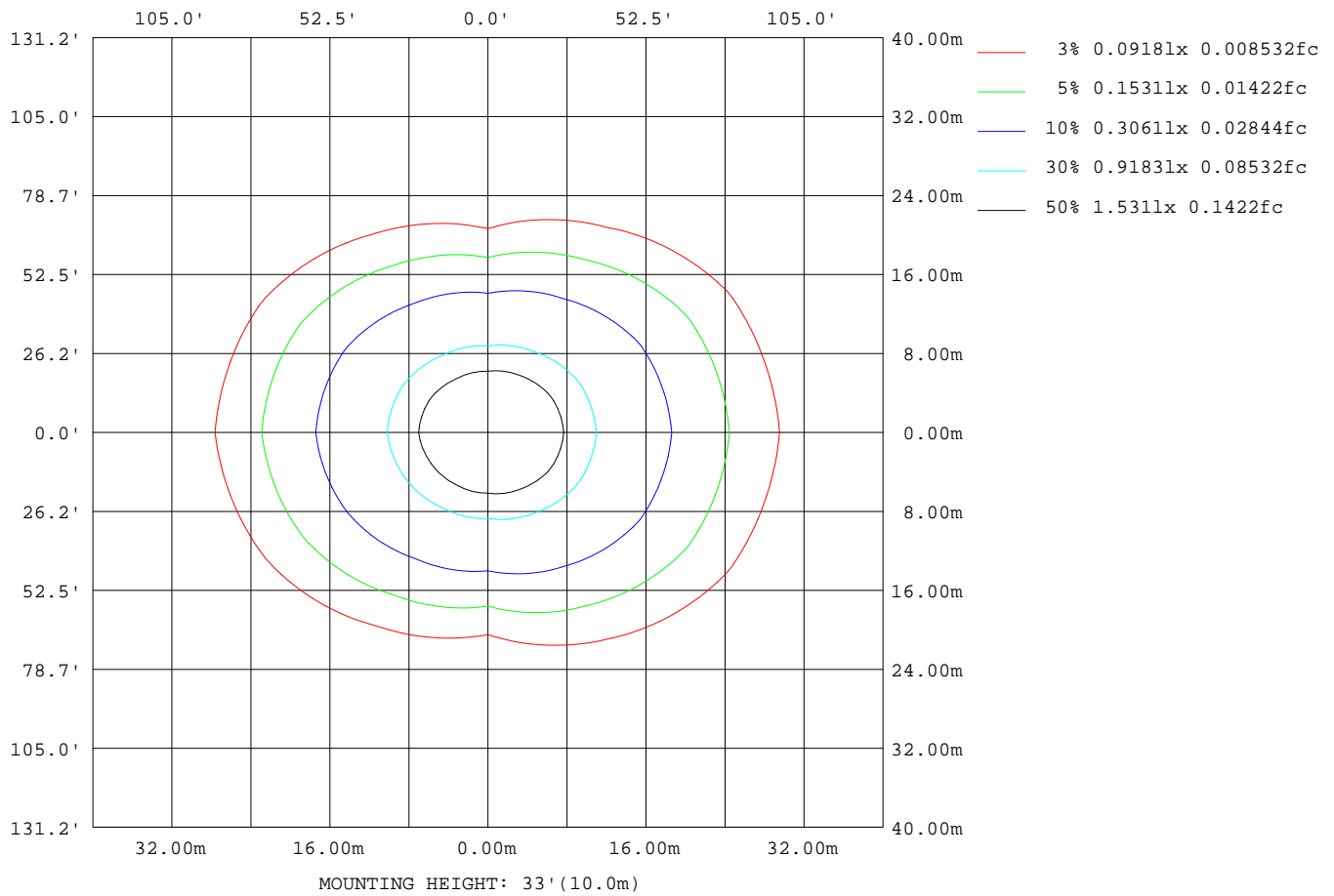


Note: The Curves indicate the illuminated area and the average illumination when the luminaire is at different distance.

C Range: 0 - 360DEG
 C Interval: 30.0DEG
 Test Speed: LOW
 Temperature: 25.3DEG
 Operators:
 Test Date: 28 December 2020

γ Range: 0 - 180DEG
 γ Interval: 0.5DEG
 Test System: EVERFINE GO-2000A_V1 SYSTEM V2.0.351
 Humidity: 65.0%
 Test Distance: 7.640m [K=1.0000]
 Remarks:

ISOLUX DIAGRAM



C Range: 0 - 360DEG
 C Interval: 30.0DEG
 Test Speed: LOW
 Temperature: 25.3DEG
 Operators:
 Test Date: 28 December 2020

γ Range: 0 - 180DEG
 γ Interval: 0.5DEG
 Test System: EVERFINE GO-2000A_V1 SYSTEM V2.0.351
 Humidity: 65.0%
 Test Distance: 7.640m [K=1.0000]
 Remarks:

LED Avg.L Report

Test:U:230.0V I:0.1390A P:17.90W PF:0.5153 Lamp Flux:2004.29x1 lm		
NAME: 18	TYPE:	WEIGHT:
SPEC.:	DIM.:	SERIAL No.:1
MFR.:	SUR.:0.025*1.105	Shielding Angle:

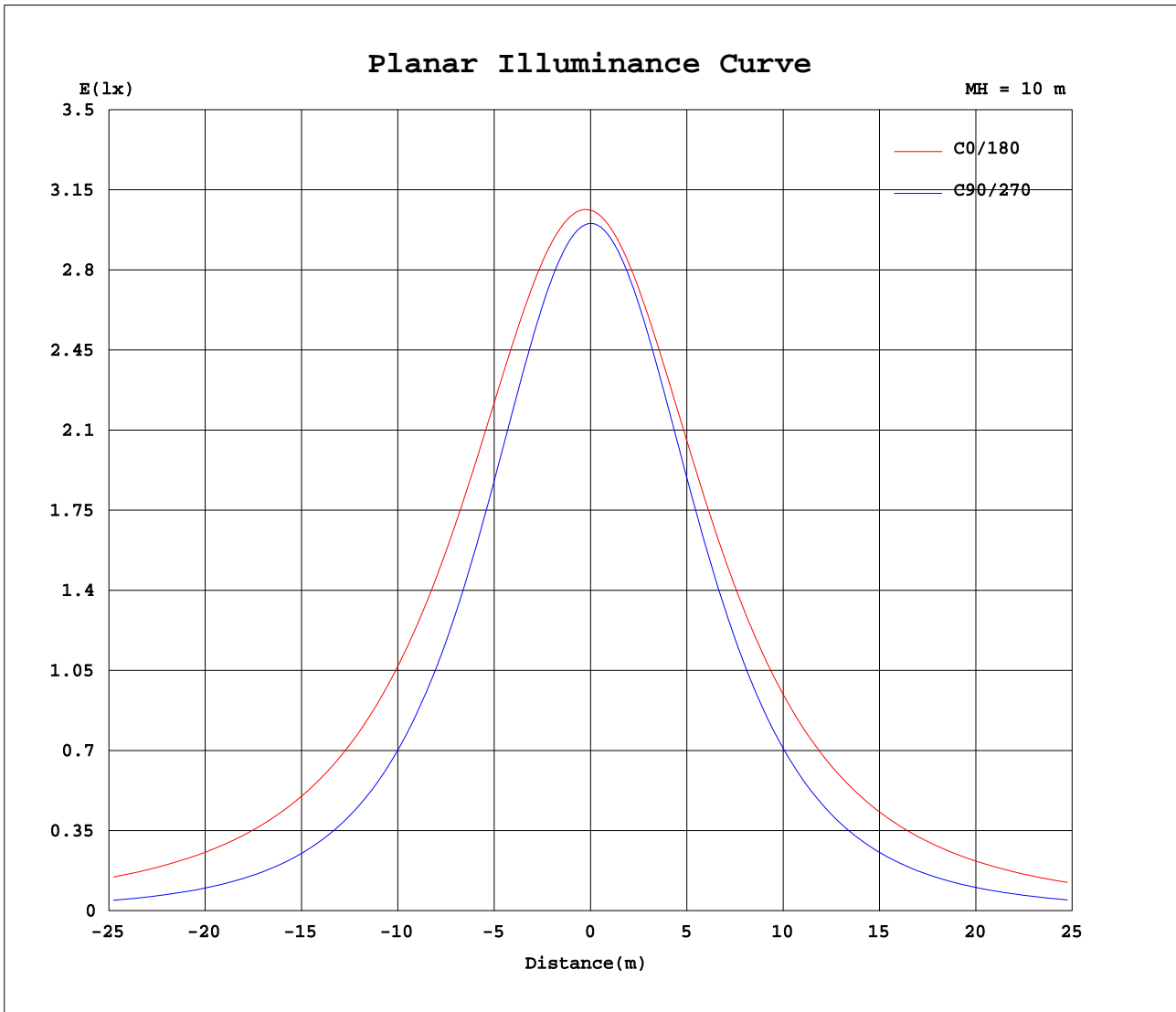
AvgL	cd/m2
L_0~180(65)av	22507
L_0~180(75)av	34844
L_0~180(85)av	97314
L_90~270(65)av	8990
L_90~270(75)av	7467
L_90~270(85)av	4485
L_45(65)av	16846
L_45(75)av	24431
L_45(85)av	64839

Standard: GB/T 29293-2012

C Range: 0 - 360DEG
C Interval: 30.0DEG
Test Speed: LOW
Temperature:25.3DEG
Operators:
Test Date:28 December 2020

γ Range: 0 - 180DEG
 γ Interval: 0.5DEG
Test System:EVERFINE GO-2000A_V1 SYSTEM V2.0.351
Humidity:65.0%
Test Distance:7.640m [K=1.0000]
Remarks:

Planar Illuminance Curve



C Range: 0 - 360DEG
 C Interval: 30.0DEG
 Test Speed: LOW
 Temperature: 25.3DEG
 Operators:
 Test Date: 28 December 2020

γ Range: 0 - 180DEG
 γ Interval: 0.5DEG
 Test System: EVERFINE GO-2000A_V1 SYSTEM V2.0.351
 Humidity: 65.0%
 Test Distance: 7.640m [K=1.0000]
 Remarks:

LUMINOUS DISTRIBUTION INTENSITY DATA

Table--1

UNIT: cd

C(DEG) γ (DEG)	0	30	60	90	120	150	180	210	240	270	300	330							
0	306	305	301	300	300	300	306	305	301	300	300	300							
5	308	306	301	299	297	296	304	303	299	299	301	302							
10	310	307	299	295	292	292	301	299	294	295	299	303							
15	311	306	295	288	285	287	297	294	288	289	296	303							
20	311	305	289	278	276	281	293	289	280	280	290	303							
25	310	302	281	267	266	274	288	282	270	269	282	301							
30	309	298	272	253	253	266	284	276	258	255	272	297							
35	308	293	260	236	240	258	279	268	245	239	261	293							
40	305	287	247	218	225	250	273	260	231	221	248	288							
45	302	281	233	199	209	241	268	252	217	201	233	282							
50	299	274	218	177	193	232	261	243	201	179	218	276							
55	295	267	203	153	176	222	255	234	185	156	202	269							
60	290	260	187	129	159	213	248	225	169	131	185	262							
65	285	252	172	103	142	203	241	216	153	107	169	254							
70	279	245	157	77.3	127	193	233	206	138	80.7	153	247							
75	274	238	144	51.7	112	183	225	197	123	55.1	139	240							
80	268	230	133	28.2	99.3	173	216	187	110	31.1	127	233							
85	261	224	124	9.76	87.9	164	208	178	98.6	11.8	117	226							
90	254	217	118	1.98	78.8	155	198	169	88.8	1.73	110	220							
95	247	211	115	5.11	72.1	147	189	160	81.2	2.12	106	214							
100	240	205	114	11.0	68.2	139	181	152	76.1	6.95	105	208							
105	232	199	114	19.7	66.7	132	172	144	73.3	14.1	105	202							
110	224	193	115	26.6	67.0	127	157	138	72.2	20.9	101	197							
115	216	187	111	31.8	69.0	122	150	132	72.7	27.5	103	192							
120	207	181	106	36.7	72.9	118	144	127	75.1	34.2	98.7	183							
125	198	174	100	41.1	77.4	115	137	122	76.8	40.3	94.0	178							
130	189	168	97.8	44.9	79.1	112	132	119	79.1	45.7	93.3	168							
135	180	150	94.7	48.8	71.9	111	126	115	67.9	50.3	90.4	147							
140	171	132	90.8	52.0	56.1	111	122	111	56.0	54.2	86.5	132							
145	163	117	87.2	56.6	31.9	108	118	106	33.9	58.1	82.8	119							
150	155	106	85.4	65.7	21.1	92.2	115	107	19.0	66.5	82.0	109							
155	147	95.4	91.1	73.8	17.7	63.4	112	94.7	14.6	74.2	88.3	98.0							
160	141	85.6	95.5	80.5	23.3	28.6	82.4	53.7	22.3	81.7	94.2	88.9							
165	134	78.9	99.8	86.5	37.3	18.8	39.2	31.5	39.8	87.4	99.1	83.9							
170	115	80.8	102	91.7	62.3	34.3	7.90	5.97	59.5	92.1	102	86.6							
175	58.5	83.9	100	96.0	85.7	65.5	8.38	36.7	82.5	96.3	101	89.8							
180	40.6	71.2	96.0	99.4	97.9	86.7	40.8	71.2	95.8	99.6	97.9	86.5							

C Range: 0 - 360DEG
 C Interval: 30.0DEG
 Test Speed: LOW
 Temperature:25.3DEG
 Operators:
 Test Date:28 December 2020

γ Range: 0 - 180DEG
 γ Interval: 0.5DEG
 Test System:EVERFINE GO-2000A_V1 SYSTEM V2.0.351
 Humidity:65.0%
 Test Distance:7.640m [K=1.0000]
 Remarks: