



# Mars

## Integrated Solar LED Street Light

"Bring the sunlight back home!"

- Wattage: 30W/60W/90W/120W
- Material: ABS
- Solar panel: Monocrystalline silicon
- Battery: Lithium Battery
- Charging time: 6-8 hrs
- Work time: 10-12 hrs
- Warranty: 2 years
- Features: 0 wire, 0 electricity, high lumen, long lifespan, daylight sensor, motion sensor, water-proof IP65 and etc.
- Applications: Outdoor places, park, garden, street, villa, garage and etc.



Monocrystalline solar chip, high energy conversion rate reaches 21%.  
Covered with tempered glass to protect solar cell to reach long lifespan > 5 years.



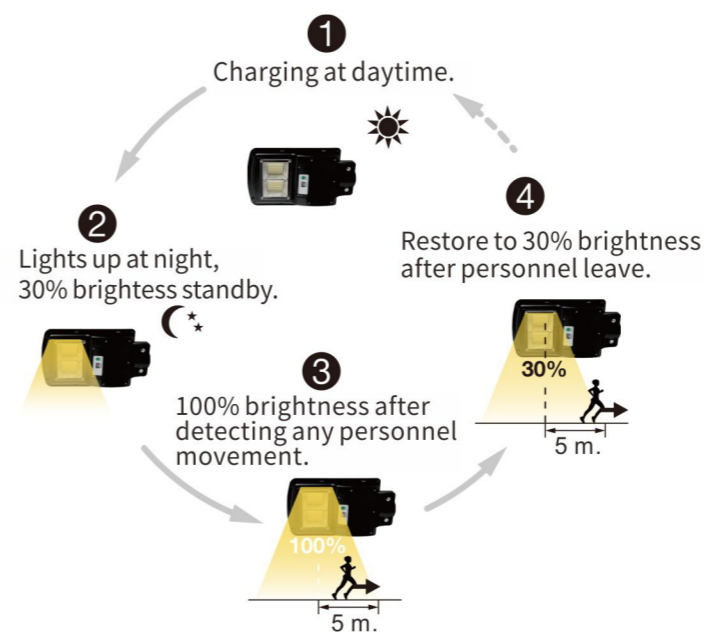
Lithium battery, AAA class  
More efficient storage of electricity, with overcharge and discharge protection lifespan >5 yrs.  
Working time >12 hrs a day, can work for two consecutive rainy days.



High hardness ABS housing, durable and waterproof.



120W is protected by a metal shell to increase the load-bearing.  
More safe and reliable.



PIR Sensor function ,energy saving.

Factory setting

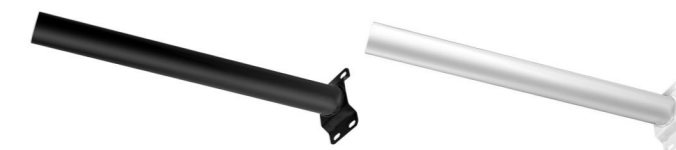
- 30%-100%-30%
- 0%-100%-0%

Remote control for option.



Accessory: Pole ,white or black color.

Provide also the screws for installation.



### Technique Datasheet

Runwin Code	Power	Lumen (lm)	CRI	Beam Angle	IP	LED	Solar Panel	Battery Capacity	Charging Time	Working Time	Lifetime
RW-01SST-ZN106-30W	30W	450lm	70	120°	65	SMD5730 84PCS	6V,6.5W	3.2V,5000mAh	6-8hrs	10-12hrs	20,000hrs
RW-01SST-ZN106-60W	60W	900lm	70	120°	65	SMD5730 168PCS	6V,10.5W	3.2V,10000mAh	6-8hrs	10-12hrs	20,000hrs
RW-01SST-ZN106-90W	90W	1490lm	70	120°	65	SMD5730 252PCS	6V,12.5W	3.2V,15000mAh	6-8hrs	10-12hrs	20,000hrs
RW-01SST-ZN106-120W	120W	1750lm	70	120°	65	SMD5730 336PCS	6V,16.6W	3.2V,20000mAh	6-8hrs	10-12hrs	20,000hrs