

Luminaire Property

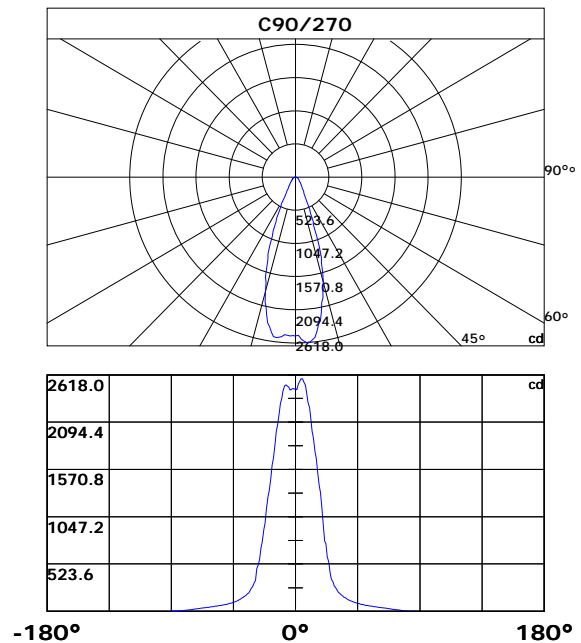
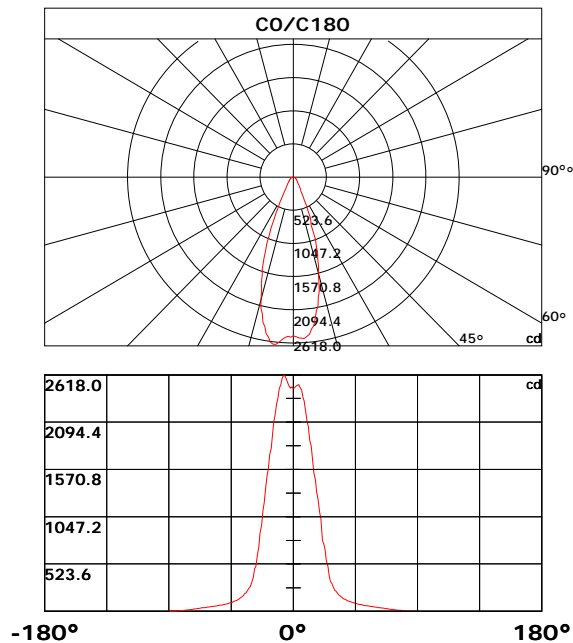
Luminaire Description: 12W (Flat Lens)
 Luminaire Category:
 Lamp Category:
 Lamp Description:
 Number of Lamp: 0
 Lamp Lumens(lm): 0
 Luminous Length(m): 0
 Luminous Width(m): 0
 Luminous Height(m): 0

Voltage: 220.0 V
 Current: 0.096 A
 Power: 12.7 W
 Power Factor: 0.596
 Test Lab:
 Photometric Type: Type C

Photometric Results

CIE Class: Direct
 Measurement Flux: 1287.02 lm
 Efficiency: 101.3402 lm/W
 Central Intensity: 2465.212cd
 Max. Intensity: 2618.019cd
 Field Angle(10%Imax): 60.47, 59.66

Max.Intensity Angle: C:150.0 G:5.0
 Beam Angle(50%Imax): 37.28, 37
 Luminaire Efficacy Rating(LER) : 100.00%
 Upward Ratio: 0.0%
 Downward Ratio: 100.0%



Light intensity data Unit[cd]

C\G	G0.0	G1.0	G2.0	G3.0	G4.0	G5.0	G6.0	G7.0	G8.0	G9.0
C0.0	2465.2	2476.4	2492.9	2502.9	2508.9	2477.8	2449.9	2373.8	2327.3	2224.7
C30.0	2465.2	2478.2	2495.0	2509.3	2494.3	2473.9	2406.0	2305.5	2252.9	2136.7
C60.0	2465.2	2453.5	2444.9	2472.5	2514.3	2529.7	2536.8	2507.9	2479.6	2393.8
C90.0	2465.2	2452.4	2516.5	2546.1	2575.1	2573.7	2537.9	2504.3	2415.3	2311.9
C120.0	2465.2	2470.0	2450.3	2461.7	2493.6	2563.3	2603.7	2610.2	2585.8	2555.8
C150.0	2465.2	2450.7	2501.1	2535.1	2590.8	2618.0	2613.4	2567.2	2485.0	2437.1
C180.0	2465.2	2485.7	2471.4	2492.5	2524.0	2574.0	2605.1	2609.4	2583.0	2511.1
C210.0	2465.2	2454.6	2462.8	2453.5	2469.3	2491.4	2543.6	2575.1	2576.9	2548.3
C240.0	2465.2	2463.9	2457.1	2492.1	2515.4	2541.5	2542.9	2506.4	2431.0	2383.8
C270.0	2465.2	2461.7	2467.1	2456.4	2449.6	2481.4	2496.4	2507.2	2496.1	2442.1
C300.0	2465.2	2456.7	2466.4	2491.8	2498.6	2492.9	2473.2	2408.8	2314.1	2207.1
C330.0	2465.2	2482.1	2467.1	2468.2	2489.6	2510.0	2506.4	2470.0	2438.5	2354.1
C360.0	2465.2	2476.4	2492.9	2502.9	2508.9	2477.8	2449.9	2373.8	2327.3	2224.7
C\G	G10.0	G11.0	G12.0	G13.0	G14.0	G15.0	G16.0	G17.0	G18.0	G19.0
C0.0	2104.5	2041.9	1897.8	1825.9	1680.7	1534.5	1452.6	1316.7	1244.1	1100.0
C30.0	2082.3	1938.6	1795.5	1721.5	1572.0	1498.4	1355.0	1278.8	1130.4	992.0
C60.0	2296.5	2241.1	2118.8	1972.9	1901.0	1752.6	1603.9	1530.9	1378.2	1299.9
C90.0	2254.7	2127.0	1987.2	1917.1	1767.3	1691.5	1547.7	1395.0	1317.4	1159.0
C120.0	2470.7	2422.8	2310.8	2187.5	2121.7	1977.2	1827.4	1752.6	1589.9	1439.0
C150.0	2327.6	2201.4	2132.0	1988.6	1835.9	1759.1	1604.6	1531.3	1370.7	1208.3
C180.0	2467.8	2360.9	2301.9	2173.2	2104.9	1958.6	1805.2	1730.4	1577.4	1504.4
C210.0	2512.9	2419.2	2307.6	2250.4	2121.7	2053.0	1908.2	1833.1	1679.7	1528.4
C240.0	2275.1	2218.6	2090.6	2021.5	1881.7	1734.0	1657.5	1505.9	1435.1	1292.7
C270.0	2353.7	2303.0	2192.5	2064.8	1996.9	1846.3	1695.8	1622.1	1476.5	1338.5
C300.0	2147.1	2017.6	1947.2	1805.2	1663.6	1589.9	1443.3	1302.8	1229.4	1088.2
C330.0	2303.7	2192.1	2070.9	2006.2	1864.9	1794.1	1649.3	1503.4	1433.6	1287.4
C360.0	2104.5	2041.9	1897.8	1825.9	1680.7	1534.5	1452.6	1316.7	1244.1	1100.0
C\G	G20.0	G21.0	G22.0	G23.0	G24.0	G25.0	G26.0	G27.0	G28.0	G29.0
C0.0	1028.5	783.2	748.8	683.4	560.7	502.1	396.2	331.9	307.0	267.0
C30.0	920.5	778.5	712.3	589.0	470.2	415.2	335.7	312.7	269.7	239.0
C60.0	1150.4	1077.5	928.3	780.6	709.1	575.4	513.5	474.2	339.3	313.2
C90.0	991.3	777.1	750.6	608.3	542.5	430.9	355.1	326.7	282.4	264.7
C120.0	1362.5	1198.0	1025.3	939.1	781.7	709.8	573.2	471.7	471.7	338.7
C150.0	1124.3	958.4	783.5	714.9	641.2	507.8	410.2	374.4	319.3	296.9
C180.0	1348.2	1203.3	1113.6	954.1	869.0	706.3	632.2	497.1	471.7	374.8
C210.0	1457.2	1310.6	1233.7	1075.0	919.0	843.2	705.6	640.8	524.2	472.4
C240.0	1149.0	1073.2	779.6	762.1	700.5	566.8	458.1	412.0	341.6	292.9
C270.0	1269.1	1127.5	978.8	905.1	765.6	700.5	576.8	518.2	472.0	341.9
C300.0	936.9	779.2	739.5	679.4	559.7	449.9	398.7	328.7	303.6	264.2
C330.0	1224.4	1073.9	929.4	859.7	727.7	604.0	544.6	474.2	350.2	321.8
C360.0	1028.5	783.2	748.8	683.4	560.7	502.1	396.2	331.9	307.0	267.0

Light intensity data Unit[cd]

C\G	G30.0	G31.0	G32.0	G33.0	G34.0	G35.0	G36.0	G37.0	G38.0	G39.0
C0.0	236.3	223.0	200.2	181.2	172.7	156.6	143.3	137.5	127.1	118.0
C30.0	225.8	203.1	183.5	174.8	159.3	145.9	139.9	129.2	119.6	115.3
C60.0	272.4	256.0	226.5	203.7	193.7	176.1	168.1	153.7	141.2	135.5
C90.0	234.8	210.3	199.5	180.6	172.1	157.1	150.4	138.4	128.0	123.2
C120.0	291.8	273.0	241.2	227.4	203.7	183.8	174.9	158.2	151.2	138.8
C150.0	260.0	230.6	217.7	195.0	185.1	167.5	151.5	145.8	133.1	123.0
C180.0	319.6	277.5	260.0	230.3	205.7	194.8	175.5	159.0	151.8	139.0
C210.0	379.1	315.0	273.9	257.0	227.9	203.7	193.3	174.2	158.2	150.9
C240.0	273.7	241.3	215.0	203.8	183.5	174.6	158.5	144.7	138.7	127.6
C270.0	315.7	274.1	257.3	228.6	203.3	192.9	174.5	166.3	151.7	145.2
C300.0	233.8	220.9	198.1	188.3	171.0	163.0	149.0	136.8	131.5	121.2
C330.0	278.4	245.5	231.6	207.3	187.0	177.8	161.9	154.7	141.9	135.4
C360.0	236.3	223.0	200.2	181.2	172.7	156.6	143.3	137.5	127.1	118.0
C\G	G40.0	G41.0	G42.0	G43.0	G44.0	G45.0	G46.0	G47.0	G48.0	G49.0
C0.0	113.8	106.2	102.8	96.5	90.8	88.1	83.2	78.2	76.3	74.3
C30.0	107.5	100.5	97.3	91.5	88.8	83.4	78.3	76.4	72.4	70.6
C60.0	125.3	116.2	112.1	104.6	97.9	94.8	89.2	84.0	81.7	77.2
C90.0	114.5	110.4	102.7	96.2	93.2	87.7	85.2	78.4	75.7	73.7
C120.0	133.2	123.2	114.3	110.2	102.8	99.4	93.2	87.6	85.0	80.2
C150.0	118.4	110.0	102.6	99.3	93.1	87.5	84.9	78.2	77.7	73.6
C180.0	127.8	122.2	113.2	109.1	101.6	95.1	92.0	86.5	83.9	79.2
C210.0	138.2	127.1	122.2	113.1	109.0	101.5	98.1	91.7	85.7	83.1
C240.0	122.7	113.7	109.7	101.8	95.8	92.4	86.9	84.3	78.2	75.1
C270.0	133.7	123.5	119.1	110.9	103.6	100.3	94.2	88.7	86.2	81.5
C300.0	116.8	108.9	102.0	98.7	92.8	87.5	85.0	78.2	76.0	74.0
C330.0	125.2	116.2	112.3	105.0	101.6	95.4	89.9	87.3	82.5	80.2
C360.0	113.8	106.2	102.8	96.5	90.8	88.1	83.2	78.2	76.3	74.3
C\G	G50.0	G51.0	G52.0	G53.0	G54.0	G55.0	G56.0	G57.0	G58.0	G59.0
C0.0	70.6	67.1	65.3	62.0	60.3	57.3	54.3	52.9	50.1	47.3
C30.0	67.0	65.3	62.0	59.0	57.5	54.5	53.1	50.3	48.9	46.2
C60.0	75.1	71.0	67.4	65.7	62.4	60.9	57.8	54.9	53.5	50.6
C90.0	69.9	66.4	63.0	61.4	58.4	56.9	54.0	51.1	49.7	46.8
C120.0	75.9	73.8	70.1	66.7	64.9	61.7	58.5	57.0	54.1	51.2
C150.0	69.9	68.1	64.8	63.1	60.1	56.9	55.4	52.6	51.2	48.4
C180.0	74.9	72.9	69.2	67.4	64.2	62.5	59.5	56.6	55.2	52.4
C210.0	78.3	76.1	71.9	68.1	66.4	63.0	61.4	58.4	55.5	54.1
C240.0	73.1	69.4	67.6	64.3	61.2	59.6	56.7	53.9	52.5	49.7
C270.0	77.3	75.3	71.5	67.7	66.2	62.9	61.3	58.3	55.4	53.9
C300.0	70.3	66.8	65.1	61.8	58.7	57.2	54.2	52.8	49.8	47.0
C330.0	76.0	72.1	70.3	66.8	65.0	61.8	58.7	57.0	54.0	51.1
C360.0	70.6	67.1	65.3	62.0	60.3	57.3	54.3	52.9	50.1	47.3

Light intensity data Unit[cd]

C\G	G60.0	G61.0	G62.0	G63.0	G64.0	G65.0	G66.0	G67.0	G68.0	G69.0
C0.0	46.0	43.3	42.0	39.3	36.8	35.5	32.9	30.4	29.1	26.7
C30.0	43.7	42.2	39.7	36.9	35.6	33.0	30.4	27.6	26.1	23.5
C60.0	49.2	47.1	43.8	42.4	39.7	38.5	35.8	34.5	31.9	28.8
C90.0	44.1	42.8	40.1	38.9	36.1	34.8	32.1	29.0	27.5	25.0
C120.0	49.8	47.1	47.1	43.1	40.5	39.2	36.5	35.2	32.6	31.0
C150.0	45.7	44.4	41.8	40.4	37.8	36.5	33.9	31.3	29.7	26.8
C180.0	50.9	48.2	47.2	44.2	41.7	39.1	37.8	35.2	32.7	31.4
C210.0	51.3	50.0	47.2	47.1	43.4	40.9	38.5	37.3	34.7	32.3
C240.0	47.0	45.5	43.0	40.3	39.1	36.6	34.1	32.8	30.4	29.2
C270.0	51.0	49.6	47.1	44.0	42.6	40.0	38.7	36.1	34.8	32.3
C300.0	45.6	42.8	41.6	38.9	37.6	35.0	32.5	31.3	28.8	27.6
C330.0	49.7	47.1	44.2	42.9	40.2	37.6	36.3	33.8	32.5	30.0
C360.0	46.0	43.3	42.0	39.3	36.8	35.5	32.9	30.4	29.1	26.7
C\G	G70.0	G71.0	G72.0	G73.0	G74.0	G75.0	G76.0	G77.0	G78.0	G79.0
C0.0	24.0	22.6	20.2	17.8	16.7	14.4	13.3	11.0	9.8	7.3
C30.0	22.3	19.9	17.5	16.4	14.1	12.9	10.5	7.9	6.8	4.4
C60.0	27.0	24.5	22.0	20.8	18.4	16.1	14.9	12.6	10.0	8.7
C90.0	23.7	21.3	19.0	17.8	15.4	14.2	11.7	9.0	7.9	5.3
C120.0	28.0	25.5	24.2	21.7	20.5	18.2	15.8	14.6	12.0	10.6
C150.0	24.4	23.2	20.7	18.3	17.1	14.7	12.2	10.8	8.2	5.8
C180.0	28.8	25.9	24.6	22.2	19.8	18.7	16.4	15.1	12.7	10.1
C210.0	31.1	28.7	26.2	24.9	22.4	21.2	18.9	16.7	15.5	13.3
C240.0	26.8	25.7	23.0	20.6	19.4	17.2	16.0	13.7	11.5	10.4
C270.0	29.8	28.6	26.0	24.8	22.2	19.8	18.6	16.3	14.1	12.9
C300.0	25.2	22.7	21.5	19.2	18.0	15.8	13.3	12.2	10.1	7.7
C330.0	27.6	26.4	23.9	22.7	20.3	18.0	16.8	14.4	13.3	11.2
C360.0	24.0	22.6	20.2	17.8	16.7	14.4	13.3	11.0	9.8	7.3
C\G	G80.0	G81.0	G82.0	G83.0	G84.0	G85.0	G86.0	G87.0	G88.0	G89.0
C0.0	5.0	3.9	2.3	1.8	0.8	0.2	0.2	0.1	0.1	0.1
C30.0	3.5	2.0	1.0	0.5	0.1	0.1	0.1	0.1	0.1	0.1
C60.0	6.2	4.0	3.2	2.0	1.4	0.4	0.1	0.1	0.1	0.1
C90.0	4.2	2.7	1.6	1.0	0.1	0.1	0.1	0.1	0.1	0.1
C120.0	8.1	5.6	4.5	3.0	1.8	1.3	0.3	0.1	0.1	0.1
C150.0	4.7	2.9	2.3	1.3	0.3	0.1	0.1	0.1	0.0	0.0
C180.0	8.7	6.3	5.1	3.3	2.5	1.4	0.4	0.1	0.1	0.1
C210.0	12.2	9.8	7.1	5.9	3.9	3.0	1.8	0.7	0.2	0.1
C240.0	7.7	6.4	4.2	3.3	1.8	0.9	0.4	0.2	0.1	0.1
C270.0	10.8	8.4	7.2	4.9	2.9	2.2	1.1	0.3	0.2	0.1
C300.0	6.5	4.3	2.5	1.9	0.9	0.2	0.2	0.1	0.1	0.1
C330.0	8.8	7.5	5.3	4.2	2.5	1.8	0.8	0.2	0.2	0.1
C360.0	5.0	3.9	2.3	1.8	0.8	0.2	0.2	0.1	0.1	0.1

Light intensity data Unit[cd]

C\G	G90.0									
C0.0	0.1									
C30.0	0.1									
C60.0	0.1									
C90.0	0.1									
C120.0	0.1									
C150.0	0.1									
C180.0	0.1									
C210.0	0.1									
C240.0	0.1									
C270.0	0.2									
C300.0	0.2									
C330.0	0.1									
C360.0	0.1									

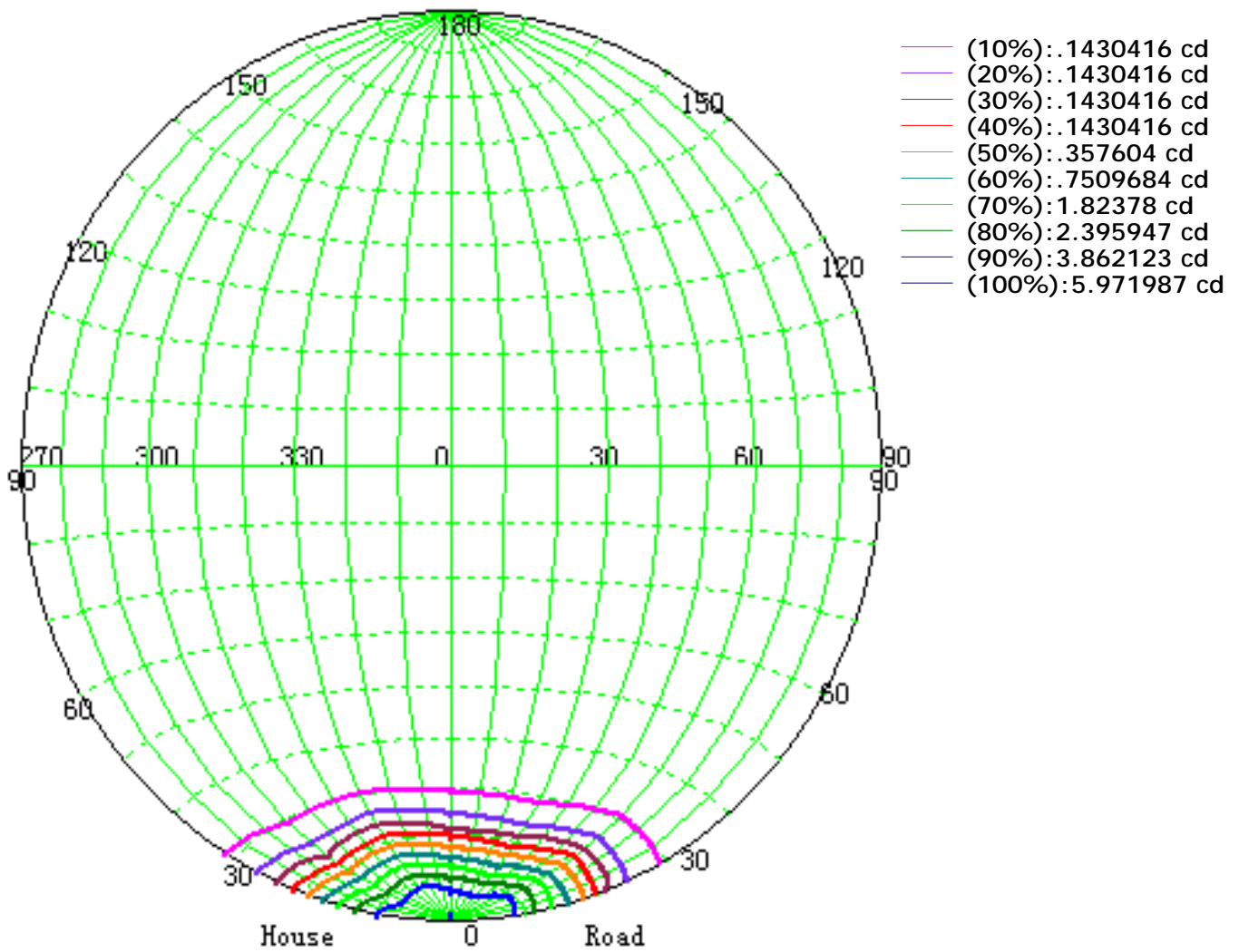
Zonal Luminous Flux Data

Gamma [°]	I _{mean} [cd]	Zonal Flux [lm]	Sum Flux [lm]	Zonal Flux [%]	Sum Flux [%]
0.0	2465.21	0.00	0.00	0.00	0.00
0.0-1.0	2465.50	2.36	2.36	0.18	0.18
1.0-2.0	2474.38	7.09	9.45	0.55	0.73
2.0-3.0	2490.18	11.87	21.32	0.92	1.66
3.0-4.0	2510.29	16.74	38.06	1.30	2.96
4.0-5.0	2527.31	21.67	59.73	1.68	4.64
5.0-6.0	2526.29	26.56	86.29	2.06	6.70
6.0-7.0	2495.48	31.17	117.46	2.42	9.13
7.0-8.0	2448.78	35.39	152.85	2.75	11.88
8.0-9.0	2375.53	39.10	191.94	3.04	14.91
9.0-10.0	2299.72	42.31	234.25	3.29	18.20
10.0-11.0	2207.01	45.03	279.29	3.50	21.70
11.0-12.0	2096.07	47.04	326.32	3.65	25.36
12.0-13.0	1994.57	48.55	374.87	3.77	29.13
13.0-14.0	1876.02	49.54	424.41	3.85	32.98
14.0-15.0	1765.76	50.00	474.41	3.88	36.86
15.0-16.0	1629.18	49.75	524.15	3.87	40.73
16.0-17.0	1525.24	49.12	573.28	3.82	44.54
17.0-18.0	1405.21	48.32	621.59	3.75	48.30
18.0-19.0	1269.82	46.54	668.13	3.62	51.91
19.0-20.0	1163.52	44.54	712.67	3.46	55.37
20.0-21.0	1011.69	41.77	754.44	3.25	58.62
21.0-22.0	893.62	38.29	792.73	2.97	61.59
22.0-23.0	795.88	35.45	828.18	2.75	64.35
23.0-24.0	687.26	32.43	860.60	2.52	66.87
24.0-25.0	584.33	28.91	889.52	2.25	69.11
25.0-26.0	491.67	25.40	914.92	1.97	71.09
26.0-27.0	430.21	22.55	937.47	1.75	72.84
27.0-28.0	371.07	20.29	957.76	1.58	74.42
28.0-29.0	315.63	17.97	975.72	1.40	75.81
29.0-30.0	276.79	16.00	991.72	1.24	77.06
30.0-31.0	247.53	14.59	1006.31	1.13	78.19
31.0-32.0	225.39	13.55	1019.86	1.05	79.24
32.0-33.0	206.48	12.72	1032.58	0.99	80.23
33.0-34.0	188.75	11.96	1044.54	0.93	81.16
34.0-35.0	174.50	11.28	1055.82	0.88	82.04
35.0-36.0	161.73	10.71	1066.53	0.83	82.87
36.0-37.0	149.87	10.16	1076.69	0.79	83.66
37.0-38.0	139.50	9.66	1086.35	0.75	84.41
38.0-39.0	131.09	9.24	1095.59	0.72	85.13
39.0-40.0	123.09	8.86	1104.45	0.69	85.81

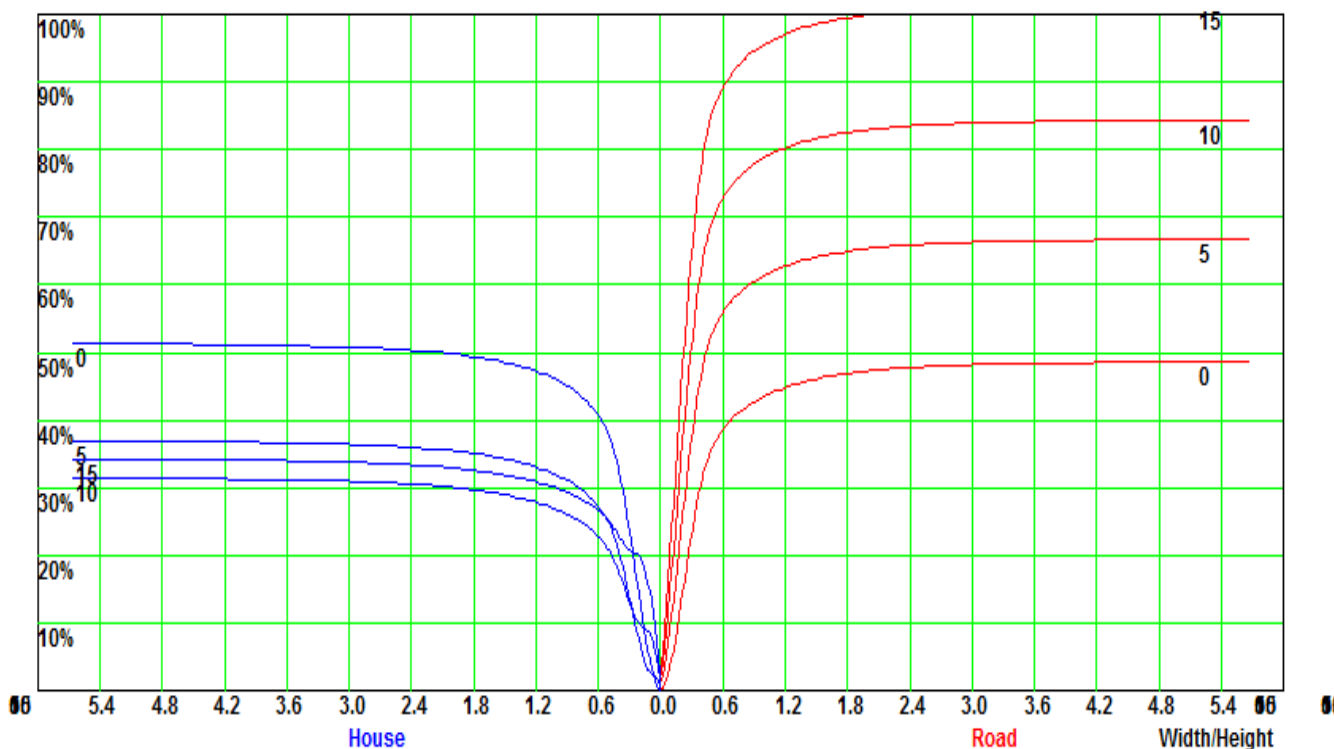
Zonal Luminous Flux Data

Gamma [°]	I _{mean} [cd]	Zonal Flux [lm]	Sum Flux [lm]	Zonal Flux [%]	Sum Flux [%]
40.0-41.0	114.85	8.47	1112.92	0.66	86.47
41.0-42.0	109.19	8.14	1121.06	0.63	87.11
42.0-43.0	103.07	7.86	1128.93	0.61	87.72
43.0-44.0	97.58	7.57	1136.50	0.59	88.30
44.0-45.0	92.75	7.31	1143.81	0.57	88.87
45.0-46.0	88.34	7.08	1150.90	0.55	89.42
46.0-47.0	83.29	6.83	1157.72	0.53	89.95
47.0-48.0	80.12	6.61	1164.33	0.51	90.47
48.0-49.0	76.88	6.45	1170.78	0.50	90.97
49.0-50.0	73.18	6.26	1177.03	0.49	91.45
50.0-51.0	70.35	6.07	1183.10	0.47	91.93
51.0-52.0	67.36	5.91	1189.01	0.46	92.38
52.0-53.0	64.51	5.74	1194.75	0.45	92.83
53.0-54.0	62.09	5.58	1200.33	0.43	93.26
54.0-55.0	59.60	5.43	1205.76	0.42	93.69
55.0-56.0	57.09	5.27	1211.03	0.41	94.10
56.0-57.0	54.64	5.11	1216.14	0.40	94.49
57.0-58.0	52.48	4.95	1221.10	0.38	94.88
58.0-59.0	49.90	4.79	1225.88	0.37	95.25
59.0-60.0	47.84	4.62	1230.50	0.36	95.61
60.0-61.0	45.83	4.47	1234.97	0.35	95.96
61.0-62.0	43.71	4.31	1239.29	0.34	96.29
62.0-63.0	41.55	4.15	1243.43	0.32	96.61
63.0-64.0	39.26	3.97	1247.40	0.31	96.92
64.0-65.0	37.22	3.78	1251.18	0.29	97.22
65.0-66.0	34.96	3.60	1254.78	0.28	97.50
66.0-67.0	32.86	3.41	1258.20	0.27	97.76
67.0-68.0	30.91	3.23	1261.43	0.25	98.01
68.0-69.0	28.71	3.04	1264.47	0.24	98.25
69.0-70.0	26.56	2.84	1267.31	0.22	98.47
70.0-71.0	24.57	2.64	1269.95	0.21	98.67
71.0-72.0	22.41	2.44	1272.39	0.19	98.86
72.0-73.0	20.60	2.25	1274.64	0.17	99.04
73.0-74.0	18.69	2.07	1276.71	0.16	99.20
74.0-75.0	16.77	1.87	1278.58	0.15	99.34
75.0-76.0	14.88	1.68	1280.26	0.13	99.47
76.0-77.0	12.87	1.48	1281.74	0.11	99.59
77.0-78.0	10.99	1.28	1283.02	0.10	99.69
78.0-79.0	8.97	1.07	1284.09	0.08	99.77
79.0-80.0	7.19	0.87	1284.96	0.07	99.84
80.0-81.0	5.32	0.68	1285.64	0.05	99.89

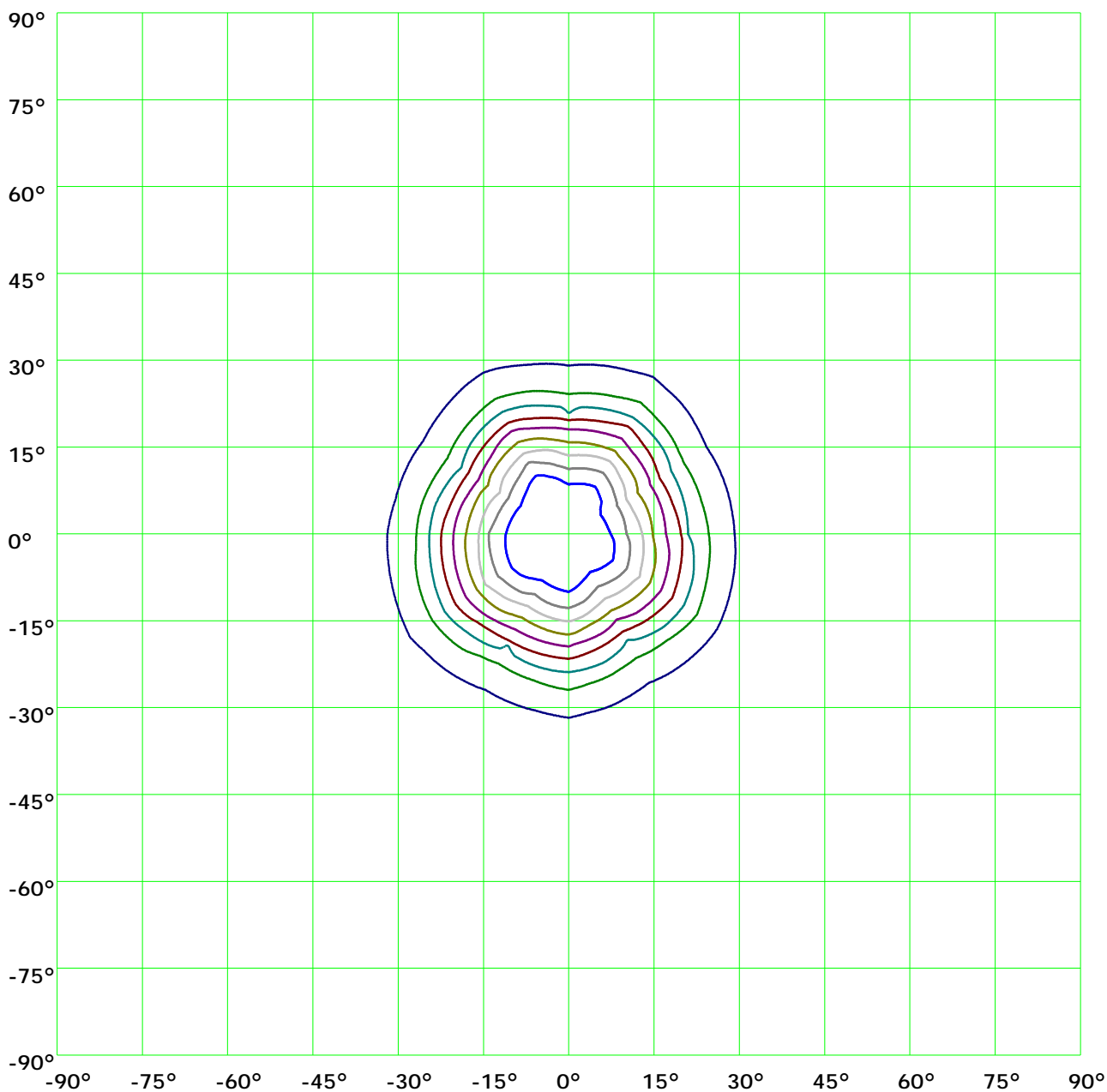
Iso-Candela [cd]



Coefficient Utilization Curve

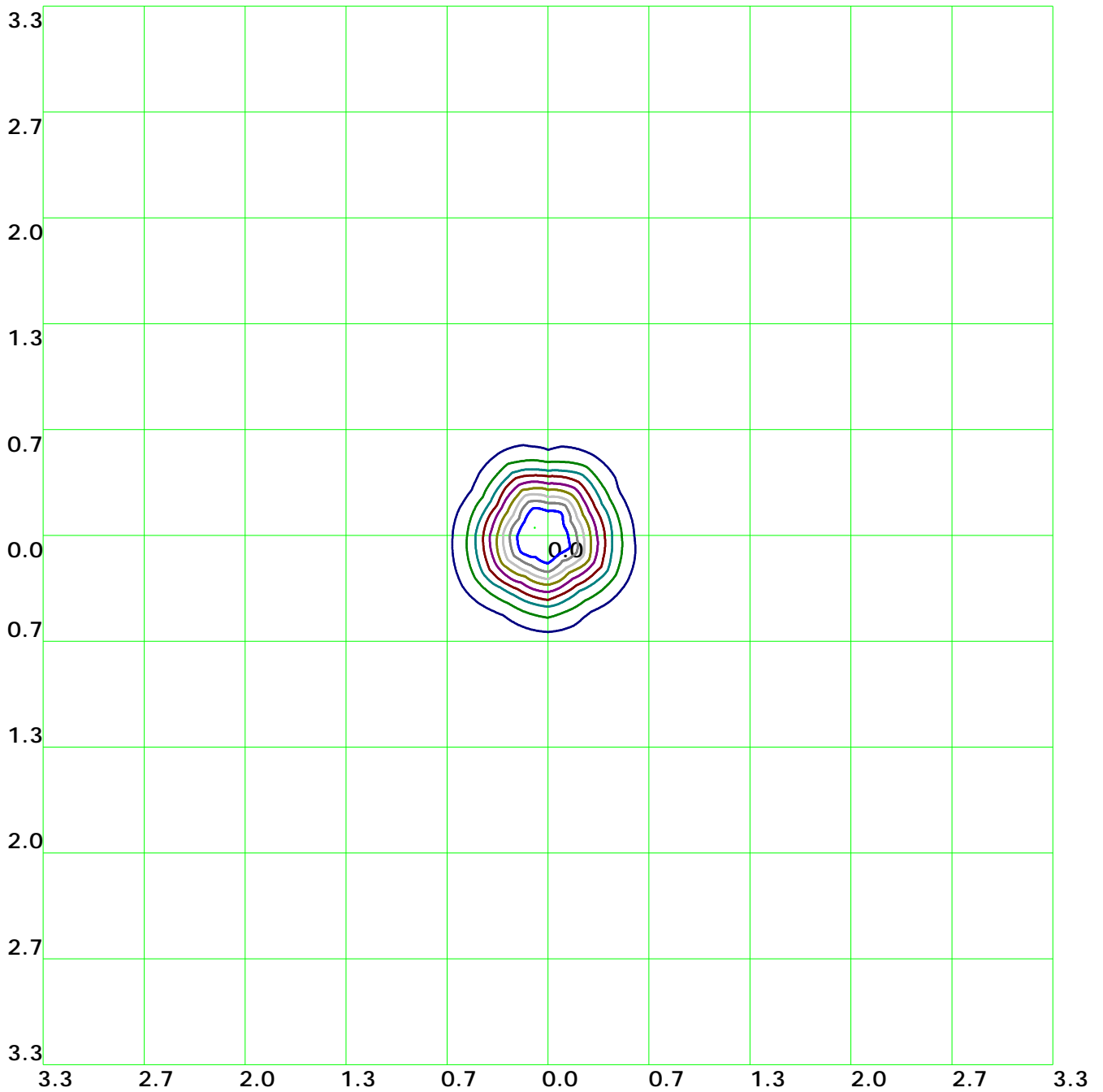


Isocandela(rectangle)



— (10%): 261.8cd	— (20%): 523.6cd	— (30%): 785.4cd	— (40%): 1047.2cd
— (50%): 1309.cd	— (60%): 1570.8cd	— (70%): 1832.6cd	— (80%): 2094.4cd
— (90%): 2356.2cd	— (100%): 2618.cd		

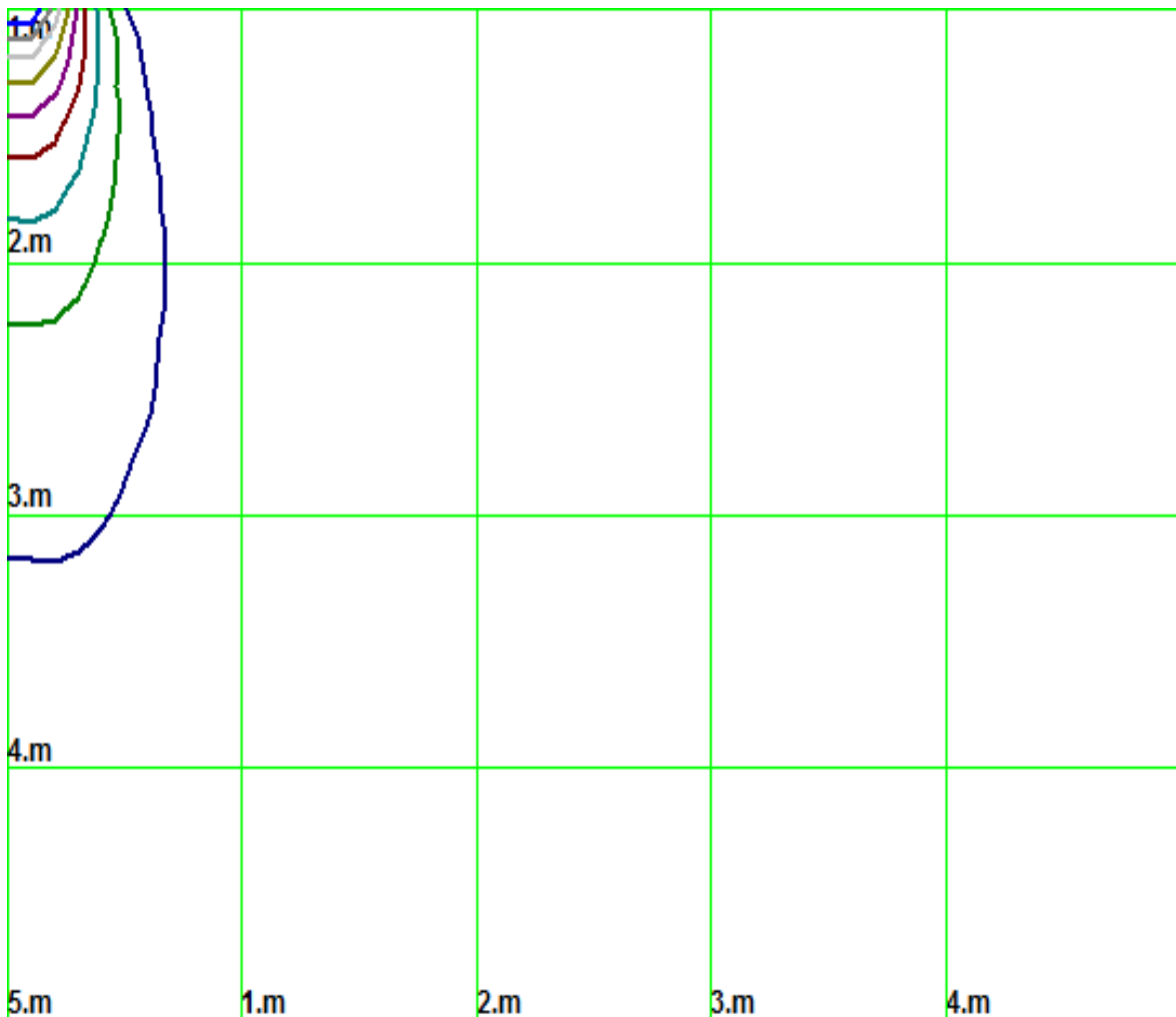
Isolx curve



Height: 1 m

- | | | | |
|-------------------|--------------------|-------------------|-------------------|
| — (10%): 261.8lx | — (20%): 523.6lx | — (30%): 785.4lx | — (40%): 1047.2lx |
| — (50%): 1309.1lx | — (60%): 1570.8lx | — (70%): 1832.6lx | — (80%): 2094.4lx |
| — (90%): 2356.2lx | — (100%): 2615.4lx | | |

Space Isolx Curve



— (10%): 261.8lx	— (20%): 523.6lx	— (30%): 785.4lx	— (40%): 1047.2lx
— (50%): 1309.1lx	— (60%): 1570.8lx	— (70%): 1832.6lx	— (80%): 2094.4lx
— (90%): 2356.2lx	— (100%): 2615.4lx		

Luminance Limiting Curve

Diameter: 0mm

Length: 0mm

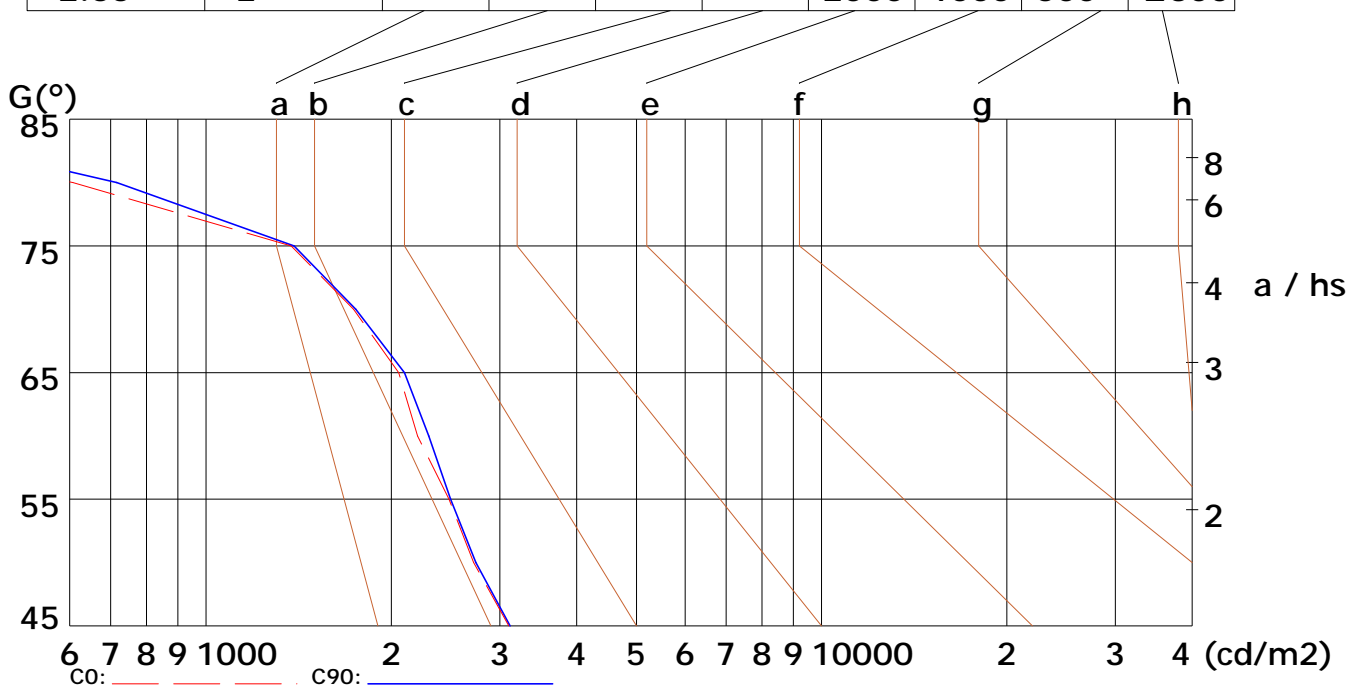
Width: 0mm

Height: 0mm

(cd/m²)

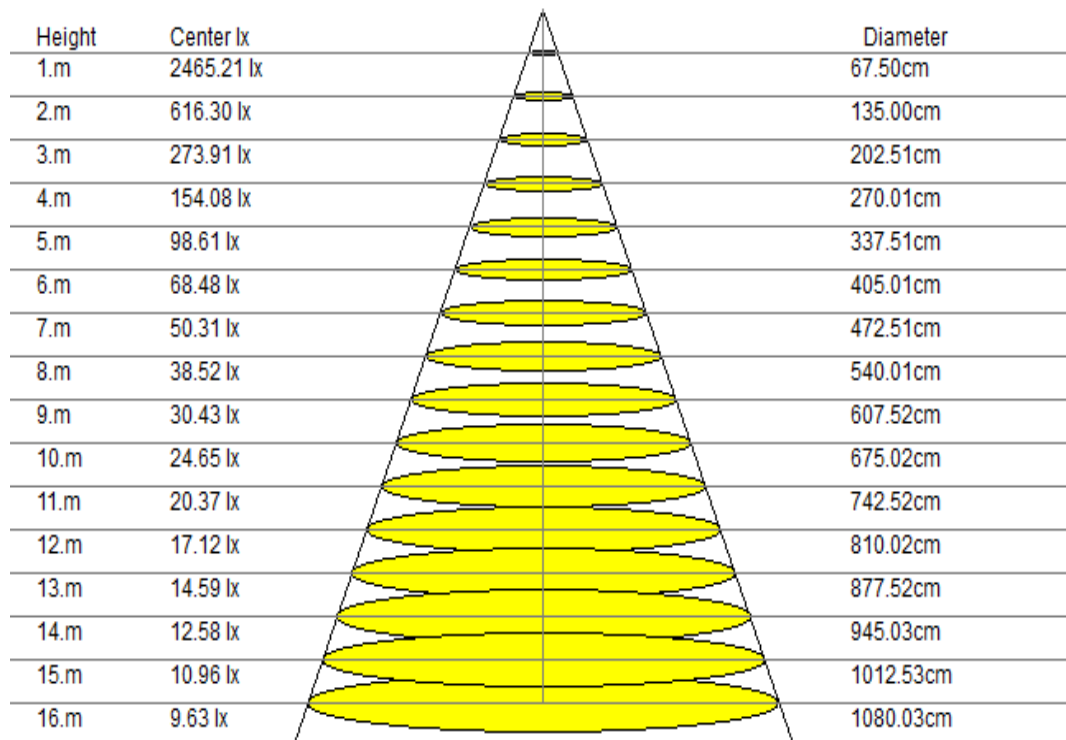
γ	45°	50°	55°	60°	65°	70°	75°	80°	85°
C0	3101	2720	2480	2206	2056	1736	1375	608	21
C90	3117	2744	2495	2299	2101	1751	1389	716	51

Glare	Quality	Service Values Illuminance (lx)									
1.15	A	2000	1000	500	≤300						
1.5	B		2000	1000	500	≤300					
1.85	C			2000	1000	500	≤300				
2.2	D				2000	1000	500	≤300			
2.55	E					2000	1000	500	≤300		



Lum. Limiting Curve (C0/C90)

Lux-Distance Curve

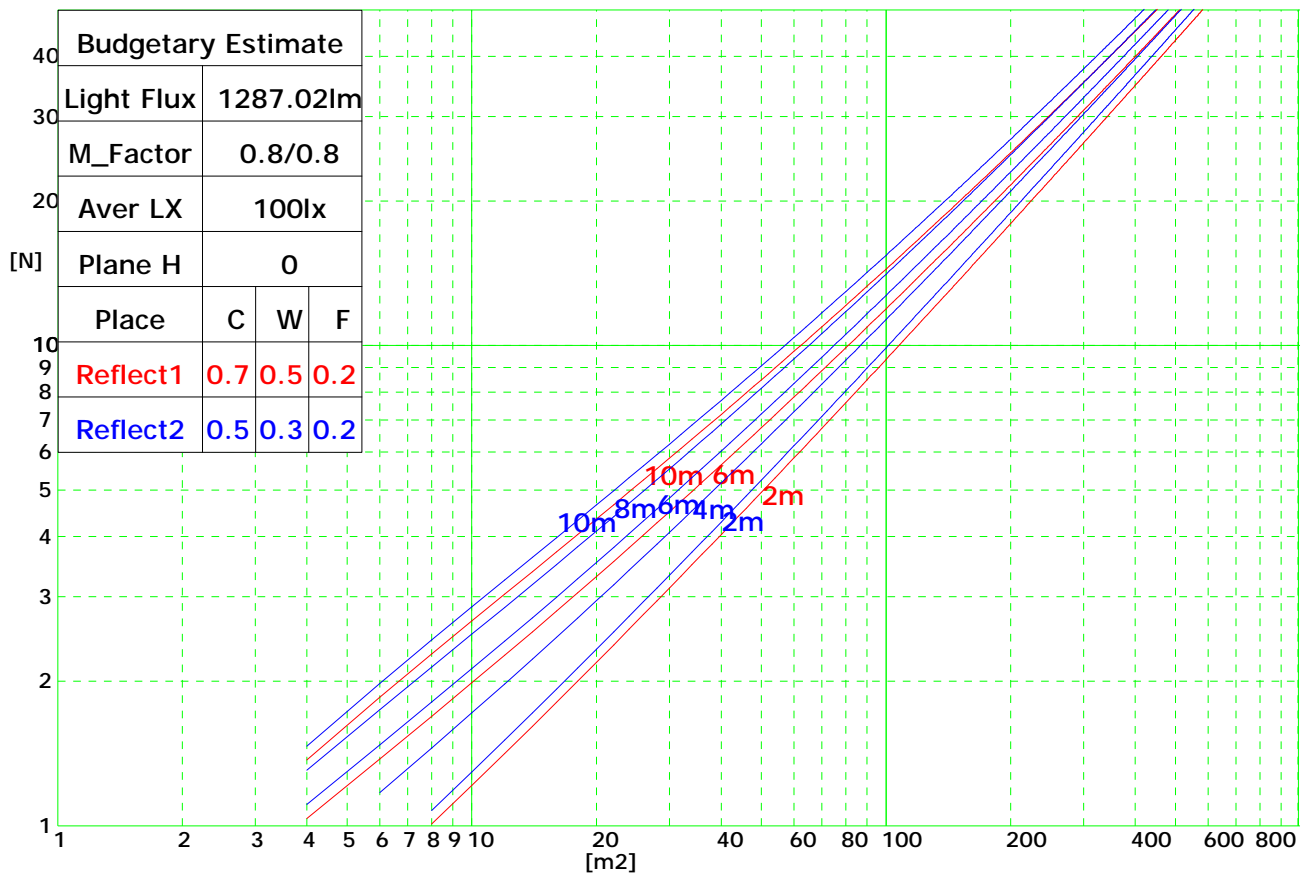


Beam Angle: 37.30°(50%Imax)

Coefficients of Utilization

RHOCC	80			70			50			30			10			0
RHOW	50	30	10	50	30	10	50	30	10	50	30	10	50	30	10	0
RCR	COEFFICIENTS OF UTILIZATION FOR RHOFC=20															
0	1.19	1.19	1.19	1.16	1.16	1.16	1.11	1.11	1.11	1.06	1.06	1.06	1.02	1.02	1.02	1.00
1	1.14	1.13	1.12	1.12	1.11	1.10	1.08	1.06	1.05	1.02	1.01	1.00	0.95	0.94	0.93	0.87
2	1.06	1.05	1.04	1.05	1.03	1.02	1.01	0.99	0.97	0.96	0.94	0.92	0.90	0.88	0.86	0.81
3	1.00	0.98	0.97	0.98	0.96	0.95	0.95	0.93	0.91	0.91	0.88	0.86	0.86	0.83	0.80	0.76
4	0.94	0.92	0.91	0.93	0.90	0.89	0.90	0.87	0.85	0.86	0.83	0.81	0.82	0.79	0.76	0.71
5	0.88	0.87	0.86	0.87	0.85	0.84	0.85	0.82	0.80	0.82	0.79	0.76	0.78	0.75	0.71	0.67
6	0.84	0.82	0.81	0.83	0.81	0.79	0.81	0.78	0.76	0.78	0.75	0.72	0.75	0.71	0.68	0.64
7	0.80	0.78	0.77	0.79	0.77	0.76	0.77	0.74	0.72	0.75	0.71	0.68	0.72	0.68	0.64	0.61
8	0.76	0.75	0.74	0.75	0.73	0.72	0.74	0.71	0.68	0.71	0.68	0.65	0.69	0.65	0.61	0.58
9	0.73	0.71	0.70	0.72	0.70	0.69	0.70	0.67	0.65	0.69	0.65	0.62	0.66	0.62	0.59	0.55
10	0.70	0.68	0.67	0.69	0.67	0.66	0.68	0.65	0.63	0.66	0.62	0.59	0.64	0.59	0.56	0.53

Indoor Budgetary Estimate Chart



UGR综合眩光指数表

Ceiling	70	70	50	50	30	70	70	50	50	30	
Wall	50	30	50	30	30	50	30	50	30	30	
Floor	20	20	20	20	20	20	20	20	20	20	
Room Size	Left to light axis direction of observation					Direction of light axis parallel observation					
X	Y										
2H	2H	13.0	14.2	13.2	14.1	14.6	13.0	14.1	13.2	14.1	14.6
	3H	14.4	15.4	14.8	15.8	16.0	14.4	15.3	14.7	15.9	16.0
	4H	15.1	16.0	15.4	16.5	16.7	15.0	15.9	15.3	16.5	16.6
	6H	15.5	16.5	15.9	16.7	16.9	15.4	16.3	15.8	16.8	16.8
	8H	15.9	16.8	16.1	16.8	17.1	15.8	16.7	15.9	16.9	17.2
4H	12H	15.9	16.7	16.0	17.1	17.4	15.7	16.5	16.1	17.0	17.3
	2H	14.0	14.8	14.1	14.9	15.2	13.8	14.7	13.9	15.0	15.1
	3H	15.5	16.2	15.8	16.4	16.8	15.5	16.2	15.7	16.3	16.6
	4H	16.1	16.9	16.5	17.0	17.2	16.0	16.7	16.3	17.1	17.2
	6H	16.7	17.3	17.0	17.5	18.0	16.5	17.2	16.9	17.5	17.8
8H	8H	16.9	17.5	17.2	17.8	18.1	16.8	17.4	17.2	17.7	18.0
	12H	17.1	17.6	17.3	17.9	18.2	16.9	17.6	17.3	17.9	18.2
	4H	16.4	17.0	16.8	17.1	17.5	16.3	17.0	16.7	17.2	17.6
	6H	17.2	17.6	17.6	17.9	18.2	17.1	17.5	17.5	17.9	18.2
	8H	17.4	17.9	17.9	18.2	18.6	17.4	17.7	17.7	18.1	18.5
12H	12H	17.8	18.1	18.1	18.5	18.8	17.7	18.1	18.0	18.3	18.8
	4H	16.5	17.0	16.9	17.2	17.7	16.4	16.9	16.8	17.3	17.7
	6H	17.3	17.7	17.6	17.9	18.3	17.3	17.6	17.5	17.9	18.3
	8H	17.7	18.1	18.1	18.2	18.7	17.6	17.9	18.0	18.3	18.7